

---

# SFChooseIdentityPanel Class Reference

Security



2006-05-23



Apple Inc.  
© 2006 Apple Computer, Inc.  
All rights reserved.

No part of this publication may be reproduced, stored in a retrieval system, or transmitted, in any form or by any means, mechanical, electronic, photocopying, recording, or otherwise, without prior written permission of Apple Inc., with the following exceptions: Any person is hereby authorized to store documentation on a single computer for personal use only and to print copies of documentation for personal use provided that the documentation contains Apple's copyright notice.

The Apple logo is a trademark of Apple Inc.

Use of the "keyboard" Apple logo (Option-Shift-K) for commercial purposes without the prior written consent of Apple may constitute trademark infringement and unfair competition in violation of federal and state laws.

No licenses, express or implied, are granted with respect to any of the technology described in this document. Apple retains all intellectual property rights associated with the technology described in this document. This document is intended to assist application developers to develop applications only for Apple-labeled computers.

Every effort has been made to ensure that the information in this document is accurate. Apple is not responsible for typographical errors.

Apple Inc.  
1 Infinite Loop  
Cupertino, CA 95014  
408-996-1010

Apple, the Apple logo, Cocoa, Mac, and Mac OS are trademarks of Apple Inc., registered in the United States and other countries.

Simultaneously published in the United States and Canada.

**Even though Apple has reviewed this document, APPLE MAKES NO WARRANTY OR REPRESENTATION, EITHER EXPRESS OR IMPLIED, WITH RESPECT TO THIS DOCUMENT, ITS QUALITY, ACCURACY, MERCHANTABILITY, OR FITNESS FOR A PARTICULAR PURPOSE. AS A RESULT, THIS DOCUMENT IS PROVIDED "AS IS," AND YOU, THE READER, ARE ASSUMING THE ENTIRE RISK AS TO ITS QUALITY AND ACCURACY.**

**IN NO EVENT WILL APPLE BE LIABLE FOR DIRECT, INDIRECT, SPECIAL, INCIDENTAL, OR CONSEQUENTIAL DAMAGES RESULTING FROM ANY**

**DEFECT OR INACCURACY IN THIS DOCUMENT, even if advised of the possibility of such damages.**

**THE WARRANTY AND REMEDIES SET FORTH ABOVE ARE EXCLUSIVE AND IN LIEU OF ALL OTHERS, ORAL OR WRITTEN, EXPRESS OR IMPLIED. No Apple dealer, agent, or employee is authorized to make any modification, extension, or addition to this warranty.**

**Some states do not allow the exclusion or limitation of implied warranties or liability for incidental or consequential damages, so the above limitation or exclusion may not apply to you. This warranty gives you specific legal rights, and you may also have other rights which vary from state to state.**

# Contents

---

## **SFChooseIdentityPanel Class Reference 7**

---

Overview 7

Tasks 8

    Returning a Shared Certificate Panel Object 8

    Providing Help 8

    Customizing the Appearance of the Sheet or Panel 9

    Displaying a Sheet or Panel 9

    Getting Identity Information from a Sheet or Panel 9

    Providing help 9

    Getting identity information from a sheet or panel 9

Class Methods 10

    sharedChooseIdentityPanel 10

Instance Methods 10

    beginSheetForWindow:modalDelegate:didEndSelector:contextInfo:identities:message: 10

    helpAnchor 11

    identity 12

    policies 12

    runModalForIdentities:message: 12

    setAlternateButtonTitle: 13

    setDefaultButtonTitle: 13

    setHelpAnchor: 14

    setPolicies: 14

    setShowsHelp: 15

    showsHelp 15

Delegate Methods 16

    chooseIdentityPanelShowHelp: 16

    chooseIdentitySheetDidEnd:returnCode:contextInfo: 16

---

## **Document Revision History 19**

---

**Index 21**

---



# Figures

## SFChooseIdentityPanel Class Reference 7

---

Figure 1 Choose identity panel 8



# SFChooseIdentityPanel Class Reference

---

<b>Inherits from</b>	NSPanel : NSWindow : NSResponder : NSObject
<b>Conforms to</b>	NSUserInterfaceValidations (NSWindow) NSAnimatablePropertyContainer (NSWindow) NSCoding (NSResponder) NSObject (NSObject)
<b>Framework</b>	/System/Library/Frameworks/SecurityInterface.framework
<b>Availability</b>	Available in Mac OS X v10.3 and later
<b>Companion guide</b>	Certificate, Key, and Trust Services Programming Guide
<b>Declared in</b>	SFChooseIdentityPanel.h

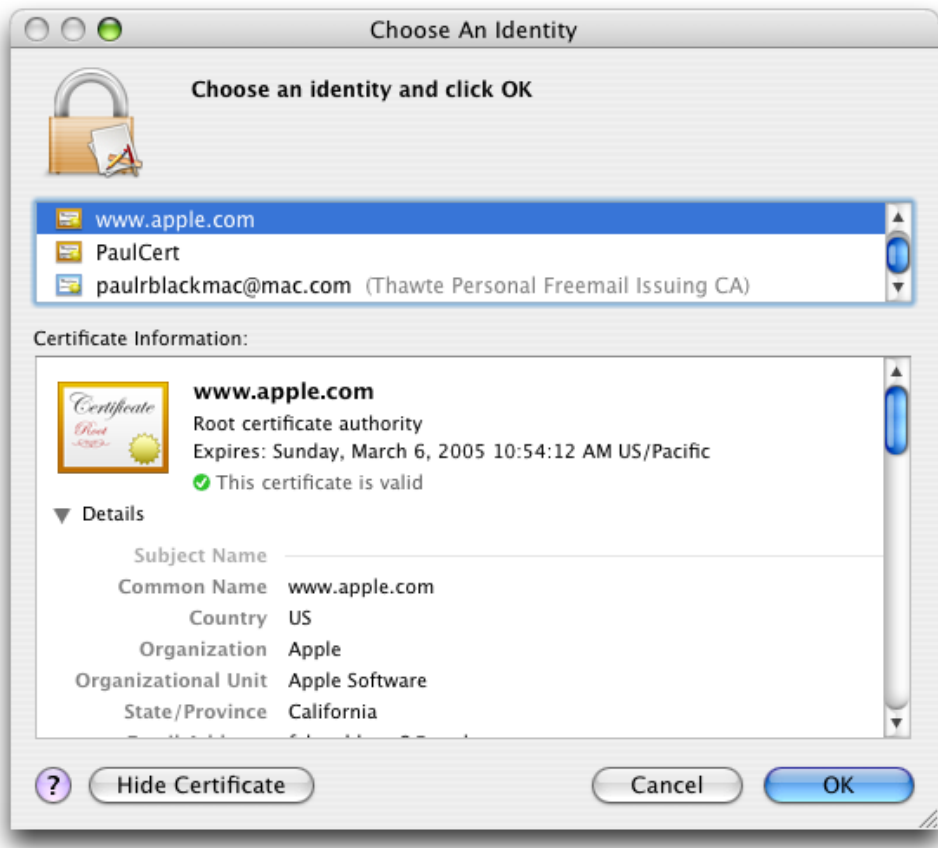
## Overview

The `SFChooseIdentityPanel` class displays a sheet or panel containing a list of identities and allows a user to select an identity from the list.

An identity is a digital certificate together with its associated private key. This class also allows the user to display the contents of any certificate in the list.

The following figure shows an example of a choose identity panel.

Figure 1 Choose identity panel



## Tasks

### Returning a Shared Certificate Panel Object

+ [sharedChooseIdentityPanel](#) (page 10)

Returns a shared choose identity panel object. If the object has not already been created, this method allocates and initializes the object first.

### Providing Help

- [setHelpAnchor](#): (page 14)

Sets the help anchor string for the sheet or modal panel.

- [setShowsHelp](#): (page 15)

Displays a Help button in the sheet or panel.

- [helpAnchor](#) (page 11)

Returns the current help anchor string for the sheet or panel.

- [showsHelp](#) (page 15)  
Indicates whether the help button is currently set to be displayed.

## Customizing the Appearance of the Sheet or Panel

- [setAlternateButtonTitle:](#) (page 13)  
Customizes the title of the alternate button.
- [setDefaultButtonTitle:](#) (page 13)  
Customizes the title of the default button.
- [setPolicies:](#) (page 14)  
Specifies one or more policies that apply to the displayed certificates.
- [policies](#) (page 12)  
Returns an array of policies used to evaluate the status of the displayed certificates.

## Displaying a Sheet or Panel

- [beginSheetForWindow:modalDelegate:didEndSelector:contextInfo:identities:message:](#) (page 10)  
Displays a list of identities in a modal sheet from which the user can select an identity.
- [runModalForIdentities:message:](#) (page 12)  
Displays a list of identities in a modal panel.

## Getting Identity Information from a Sheet or Panel

- [identity](#) (page 12)  
Returns the identity that the user chose in the panel or sheet.

## Providing help

- [chooseIdentityPanelShowHelp:](#) (page 16) *delegate method*  
Implements custom help behavior for the modal panel.

## Getting identity information from a sheet or panel

- [chooseIdentitySheetDidEnd:returnCode:contextInfo:](#) (page 16) *delegate method*  
The delegate method called when the sheet is closed.

## Class Methods

### sharedChooseIdentityPanel

Returns a shared choose identity panel object. If the object has not already been created, this method allocates and initializes the object first.

```
+ (SFChooseIdentityPanel *)sharedChooseIdentityPanel
```

#### Discussion

Use this method if your application displays a single choose identity panel or sheet at a time. If your application can display multiple choose identity panels or sheets at once, you must allocate separate object instances (using the `alloc` class method inherited from `NSObject`) and initialize them (using the `init` instance method, also inherited from `NSObject`) instead of using this class method.

#### Availability

Available in Mac OS X v10.3 and later.

#### See Also

```
+alloc(NSObject)
-init(NSObject)
```

#### Declared In

SFChooseIdentityPanel.h

## Instance Methods

### beginSheetForWindow:modalDelegate:didEndSelector:contextInfo:identities:message:

Displays a list of identities in a modal sheet from which the user can select an identity.

```
- (void)beginSheetForWindow:(NSWindow *)docWindow modalDelegate:(id)delegate
    didEndSelector:(SEL)didEndSelector contextInfo:(void *)contextInfo
    identities:(NSArray *)identities message:(NSString *)message
```

#### Parameters

*docWindow*

The parent window to which the sheet is attached.

*delegate*

The delegate object in which the method specified in the `didEndSelector` parameter is implemented.

*didEndSelector*

A method selector for a delegate method called when the sheet has been dismissed. Implementation of this delegate method is optional.

*contextInfo*

A pointer to data that is passed to the delegate method. You can use this data pointer for any purpose you wish.

*identities*

An array of identity objects (objects of type `SecIdentityRef`). Use the `SecIdentitySearchCopyNext` function (in `Security/SecIdentitySearch.h`) to find identity objects.

*message*

A message string to display in the sheet.

**Discussion**

Use the `identity` method to obtain the identity chosen by the user.

The delegate method has the following signature:

```
-(void)createPanelDidEnd:(NSWindow *)sheet
    returnCode:(int)returnCode
    contextInfo:(void *)contextInfo
```

The parameters for the delegate method are:

*sheet*

The window to which the sheet was attached.

*returnCode*

The result code indicating which button the user clicked: either `NSFileHandlingPanelOKButton` or `NSFileHandlingPanelCancelButton`.

*contextInfo*

Client-defined contextual data that is passed in the `contextInfo` parameter of the `beginSheetForDirectory:... method`.

The delegate method may dismiss the keychain settings sheet itself; if it does not, the sheet is dismissed on return from the `beginSheetForDirectory:... method`.

**Availability**

Available in Mac OS X v10.3 and later.

**See Also**

`SecIdentitySearchCopyNext` (`Security/SecIdentitySearch.h`)

- [identity](#) (page 12)

- [runModalForIdentities:message:](#) (page 12)

**Declared In**

`SFChooseIdentityPanel.h`

## helpAnchor

Returns the current help anchor string for the sheet or panel.

```
-(NSString *)helpAnchor
```

**Availability**

Available in Mac OS X v10.4 and later.

**See Also**

- [setHelpAnchor:](#) (page 14)

**Declared In**

SFChooseIdentityPanel.h

**identity**

Returns the identity that the user chose in the panel or sheet.

- (SecIdentityRef)identity

**Availability**

Available in Mac OS X v10.3 and later.

**Declared In**

SFChooseIdentityPanel.h

**policies**

Returns an array of policies used to evaluate the status of the displayed certificates.

- (NSArray \*)policies

**Discussion**

This method returns an autoreleased NSArray containing one or more objects of type `SecPolicyRef`, as set by a previous `setPolicies:` call, or the Apple X.509 Basic Policy if `setPolicies:` has not been called. See “AppleX509TP Trust Policies” in *Certificate, Key, and Trust Services Reference* for a list of policies and object identifiers provided by the AppleX509TP module.

**Availability**

Available in Mac OS X v10.4 and later.

**See Also**- [setPolicies:](#) (page 14)**Declared In**

SFChooseIdentityPanel.h

**runModalForIdentities:message:**

Displays a list of identities in a modal panel.

- (NSInteger)runModalForIdentities:(NSArray \*)identities message:(NSString \*)message

**Parameters***identities*

An array of identity objects (objects of type `SecIdentityRef`). Use the `SecIdentitySearchCopyNext` function (in `Security/SecIdentitySearch.h`) to find identity objects.

*message*

A message string to display in the panel.

**Discussion**

This method returns `NSOKButton` if the default button is clicked, or `NSCancelButton` if the alternate button is clicked.

Use the `identity` method to obtain the identity chosen by the user.

#### Availability

Available in Mac OS X v10.3 and later.

#### See Also

`SecIdentitySearchCopyNext` (`Security/SecIdentitySearch.h`)

- [identity](#) (page 12)

- [beginSheetForWindow:modalDelegate:didEndSelector:contextInfo:identities:message:](#) (page 10)

#### Declared In

`SFChooseIdentityPanel.h`

### setAlternateButtonTitle:

Customizes the title of the alternate button.

```
- (void)setAlternateButtonTitle:(NSString *)title
```

#### Parameters

*title*

The new title for the alternate button. If this method is not called, or if `title` is set to `nil`, the button is not shown.

#### Discussion

The alternate button is typically labelled “Cancel”. The alternate button dismisses the sheet or panel and returns a value of `NSCancelButton`.

#### Availability

Available in Mac OS X v10.4 and later.

#### See Also

- [setDefaultButtonTitle:](#) (page 13)

#### Declared In

`SFChooseIdentityPanel.h`

### setDefaultButtonTitle:

Customizes the title of the default button.

```
- (void)setDefaultButtonTitle:(NSString *)title
```

#### Parameters

*title*

The new title for the default button. The default title for this button is “OK”.

#### Discussion

The default button dismisses the sheet or panel and returns a value of `NSOKButton`.

#### Availability

Available in Mac OS X v10.4 and later.

**See Also**

- [setAlternateButtonTitle:](#) (page 13)

**Declared In**

SFChooseIdentityPanel.h

**setHelpAnchor:**

Sets the help anchor string for the sheet or modal panel.

```
- (void)setHelpAnchor:(NSString *)anchor
```

**Parameters**

*anchor*

The new help anchor string.

**Discussion**

You may call this function to set a help anchor string if you display a help button in the sheet or modal panel and do not implement the delegate method `certificatePanelShowHelp:`, or if the delegate method returns `NO`. If you display a help button, do not set a help anchor string, and do not implement a delegate, the certificate panel displays a default help page (“What is a digital identity?”).

**Availability**

Available in Mac OS X v10.4 and later.

**See Also**

- [setShowsHelp:](#) (page 15)

- [chooseIdentityPanelShowHelp:](#) (page 16)

- [helpAnchor](#) (page 11)

**Declared In**

SFChooseIdentityPanel.h

**setPolicies:**

Specifies one or more policies that apply to the displayed certificates.

```
- (void)setPolicies:(id)policies
```

**Parameters**

*policies*

The policies to use when evaluating the certificates’ status. You can pass either a `SecPolicyRef` object or an `NSArray` (containing one or more `SecPolicyRef` instances) in this parameter. If `policies` is set to `nil`, the Apple X.509 Basic Policy is used.

**Discussion**

The `SFChooseIdentityPanel` class evaluates trust for the certificates it displays. Applications typically display certificates in the context of a specific use, such as SSL or S/MIME. You should set only the policy references that apply to your intended use. See “AppleX509TP Trust Policies” for a list of policies and object identifiers provided by the AppleX509TP module.

**Availability**

Available in Mac OS X v10.4 and later.

**See Also**

- [policies](#) (page 12)

**Declared In**

SFChooseIdentityPanel.h

**setShowsHelp:**

Displays a Help button in the sheet or panel.

- (void)setShowsHelp:(BOOL)showsHelp

**Parameters**

*showsHelp*

Set to YES to display the help button. The help button is hidden by default.

**Discussion**

When a user clicks the help button, the choose identity panel first checks the delegate for a `certificatePanelShowHelp:` method. If the delegate does not implement such a method, or the delegate method returns NO, then the `NSHelpManager` method `openHelpAnchor:inBook:` is called with a nil book and the anchor specified by the `setHelpAnchor:` method. An exception is raised if the delegate returns NO and there is no help anchor set.

**Availability**

Available in Mac OS X v10.4 and later.

**See Also**

- [chooseIdentityPanelShowHelp:](#) (page 16)

- [setHelpAnchor:](#) (page 14)

- `openHelpAnchor:inBook:` (`NSHelpManager`)

- [showsHelp](#) (page 15)

**Declared In**

SFChooseIdentityPanel.h

**showsHelp**

Indicates whether the help button is currently set to be displayed.

- (BOOL)showsHelp

**Discussion**

This method returns YES if the help button is currently set to be displayed.

**Availability**

Available in Mac OS X v10.4 and later.

**See Also**

- [setShowsHelp:](#) (page 15)

**Declared In**

SFChooseIdentityPanel.h

## Delegate Methods

### chooseIdentityPanelShowHelp:

Implements custom help behavior for the modal panel.

```
- (BOOL)chooseIdentityPanelShowHelp:(SFChooseIdentityPanel *)sender
```

#### Parameters

*sender*

The choose identity panel for which to implement custom help.

#### Discussion

You can use this delegate method to implement custom help if you call the `setShowsHelp:` method to display a help button in the sheet or panel. If you are not implementing custom help, do not implement this method.

#### Availability

Available in Mac OS X v10.4 and later.

#### See Also

- [setShowsHelp:](#) (page 15)
- `setDelegate:` (NSWindow)

#### Declared In

SFChooseIdentityPanel.h

### chooseIdentitySheetDidEnd:returnCode:contextInfo:

The delegate method called when the sheet is closed.

```
- *)sheet
    returnCode:(int)returnCode contextInfo:(void *)contextInfo
```

#### Parameters

*sheet*

The parent window to which the sheet is attached.

*returnCode*

An indication of which button the user clicked: either `NSOKButton` or `NSCancelButton`.

*contextInfo*

A pointer to data that is passed in the `contextInfo` parameter of the `beginSheetForWindow:modalDelegate:didEndSelector:contextInfo:identities:message:` method. You can use this data pointer for any purpose you wish.

#### Discussion

Modal delegates in sheets are temporary and the relationship only lasts until the sheet is dismissed. The `SFChooseIdentityPanel` object does not retain the modal delegate.

#### Availability

Available in Mac OS X v10.3 and later.

**See Also**

- [beginSheetForWindow:modalDelegate:didEndSelector:contextInfo:identities:message:](#) (page 10)



# Document Revision History

---

This table describes the changes to *SFChooseIdentityPanel Class Reference*.

Date	Notes
2006-05-23	First publication of this content as a separate document.

**REVISION HISTORY**

Document Revision History

# Index

---

## B

---

beginSheetForWindow:modalDelegate:didEndSelector:  
contextInfo:identities:message: **instance method 10**

## C

---

chooseIdentityPanelShowHelp: <NSObject> delegate  
method **16**  
chooseIdentitySheetDidEnd:returnCode:contextInfo:  
<NSObject> delegate method **16**

## H

---

helpAnchor **instance method 11**

## I

---

identity **instance method 12**

## P

---

policies **instance method 12**

## R

---

runModalForIdentities:message: **instance method 12**

## S

---

setAlternateButtonTitle: **instance method 13**  
setDefaultButtonTitle: **instance method 13**  
setHelpAnchor: **instance method 14**  
setPolicies: **instance method 14**  
setShowsHelp: **instance method 15**  
sharedChooseIdentityPanel **class method 10**  
showsHelp **instance method 15**