

Case Design Guidelines for Apple Devices

Release R10

Contents

1. Introduction 7

1.1 Purpose of This Specification 7

1.2 Requirements and Recommendations 7

2. Cases 8

2.1 Product Design 8

2.1.1 Device Layouts and Dimensions for Apple Devices 8

2.1.2 Access to Controls 8

2.1.3 Access to the Headset Jack and 30-pin or Lightning Connector 8

2.1.4 Access to the Smart Connector 9

2.1.5 Device Protection 9

2.1.6 Cover Glass Contact 9

2.1.7 Dock Compatibility 9

2.1.8 Touchscreen 9

2.2 Acoustics 10

2.2.1 Speaker and Microphone Openings 10

2.2.2 Speaker to Microphone Coupling 10

2.2.3 Call Quality 10

2.3 Sensors 11

2.3.1 Ambient Light and Proximity Sensor Interference 11

2.3.2 Magnetic Interference 11

2.3.3 Touch ID Sensor 11

2.4 Camera 11

2.4.1 Geometry 12

2.4.2 Color 12

2.4.3 Surface Finish 12

2.4.4 Image Degradation Examples 13

2.5 Reliability 14

2.5.1 Device Insertion and Removal 14

2.5.2 Colorfastness 15

2.6 Environmental 15

2.7 RF 15

2.7.1 Materials and Coatings 15

2.7.2 Near Field Communication (NFC) 16

2.8 Touchscreen 16

2.8.1 Overlay 16

2.8.2 Edge Swipe Gestures 16

2.8.3 Edge Press Gestures 17

3. Device Dimensional Drawings 18

3.1 iPhone 6s Plus 21

3.2 iPhone 6s 22

3.3 iPhone 6 Plus 23

3.4 iPhone 6 24

3.5 iPhone 5s 25

3.6 iPhone 5c 26

3.7 iPhone 5 27

3.8 iPhone 4s 28

3.9 iPhone 4 (CDMA model) 29

3.10 iPhone 4 (GSM model) 30

3.11 iPhone 3G and iPhone 3GS 31

3.12 iPhone 32

3.13 iPad Pro Wi-Fi 33

3.14 iPad Pro Wi-Fi + Cellular 34

3.15 iPad mini 4 Wi-Fi 35

3.16 iPad mini 4 Wi-Fi + Cellular 36

3.17 iPad Air 2 Wi-Fi 37

3.18 iPad Air 2 Wi-Fi + Cellular 38

3.19 iPad mini 2 & 3 Wi-Fi 39

3.20 iPad mini 2 & 3 Wi-Fi + Cellular 40

3.21 iPad Air Wi-Fi 41

3.22 iPad Air Wi-Fi + Cellular 42

3.23 iPad mini with Wi-Fi 43

3.24 iPad mini with Wi-Fi + Cellular 44

3.25 iPad with Wi-Fi (4th generation) 45

3.26 iPad with Wi-Fi + Cellular (4th generation) 46

3.27 iPad with Wi-Fi (3rd generation) 47

3.28 iPad with Wi-Fi + 4G (3rd generation) 48

3.29 iPad 2 with Wi-Fi 49

3.30 iPad 2 with Wi-Fi + 3G 50

3.31 iPad with Wi-Fi 51

3.32 iPad with Wi-Fi + 3G 52

3.33 iPod touch (6th generation) 53

3.34 iPod touch (5th generation)	54
3.35 iPod touch (4th generation)	55
3.36 iPod touch (3rd generation)	56
3.37 iPod touch (2nd generation)	57
3.38 iPod touch	58
3.39 iPod nano (7th generation)	59
3.40 iPod nano (6th generation)	60
3.41 iPod nano (5th generation)	61
3.42 iPod nano (4th generation)	62
3.43 iPod nano (3rd generation)	63
3.44 iPod nano (2nd generation)	64
3.45 iPod nano	65
3.46 iPod classic 160GB	66
3.47 iPod classic 80GB	67
3.48 iPod (5th generation) 60GB/80GB	68
3.49 iPod (5th generation) 30GB	69
3.50 iPod (4th generation)	70
3.51 iPod (3rd generation)	71
3.52 iPod photo 30GB/60GB	72
3.53 iPod photo	73
3.54 iPod shuffle (4th generation)	74
3.55 iPod shuffle (3rd generation)	75
3.56 iPod shuffle (2nd generation)	76
3.57 iPod shuffle	77
3.58 iPod mini	79

4. Revision History

80

Figures

2. Cases 8

- Figure 2-1 Touchscreen Keep-out Area 10
- Figure 2-2 Image degradation by color shifting 13
- Figure 2-3 Image degradation by decrease of contrast 13
- Figure 2-4 Image degradation by blocking 14
- Figure 2-5 Image degradation by flash interference 14

3. Device Dimensional Drawings 18

- Figure 3-1 iPhone 6s Plus Dimensional Drawing 21
- Figure 3-2 iPhone 6s Dimensional Drawing 22
- Figure 3-3 iPhone 6 Plus Dimensional Drawing 23
- Figure 3-4 iPhone 6 Dimensional Drawing 24
- Figure 3-5 iPhone 5s Dimensional Drawing 25
- Figure 3-6 iPhone 5c Dimensional Drawing 26
- Figure 3-7 iPhone 5 Dimensional Drawing 27
- Figure 3-8 iPhone 4s Dimensional Drawing 28
- Figure 3-9 iPhone 4 CDMA Dimensional Drawing 29
- Figure 3-10 iPhone 4 GSM Dimensional Drawing 30
- Figure 3-11 iPhone 3G and iPhone 3GS Dimensional Drawing 31
- Figure 3-12 iPhone Dimensional Drawing 32
- Figure 3-13 iPad Pro Wi-Fi Dimensional Drawing 33
- Figure 3-14 iPad Pro Wi-Fi + Cellular Dimensional Drawing 34
- Figure 3-15 iPad mini 4 Wi-Fi Dimensional Drawing 35
- Figure 3-16 iPad mini 4 Wi-Fi + Cellular Dimensional Drawing 36
- Figure 3-17 iPad Air 2 Wi-Fi Dimensional Drawing 37
- Figure 3-18 iPad Air 2 Wi-Fi + Cellular Dimensional Drawing 38
- Figure 3-19 iPad mini 2 & iPad mini 3 Wi-Fi Dimensional Drawing 39
- Figure 3-20 iPad mini 2 & iPad mini 3 Wi-Fi + Cellular Dimensional Drawing 40
- Figure 3-21 iPad Air Wi-Fi Dimensional Drawing 41
- Figure 3-22 iPad Air Wi-Fi + Cellular Dimensional Drawing 42
- Figure 3-23 iPad mini with Wi-Fi Dimensional Drawing 43
- Figure 3-24 iPad mini Wi-Fi + Cellular Dimensional Drawing 44
- Figure 3-25 iPad Wi-Fi (4th generation) Dimensional Drawing 45
- Figure 3-26 iPad Wi-Fi + Cellular (4th generation) Dimensional Drawing 46

Figure 3-27	iPad Wi-Fi (3rd Generation) Dimensional Drawing	47
Figure 3-28	iPad Wi-Fi + 4G (3rd Generation) Dimensional Drawing	48
Figure 3-29	iPad 2 Wi-Fi Dimensional Drawing	49
Figure 3-30	iPad 2 Wi-Fi + 3G Dimensional Drawing	50
Figure 3-31	iPad Wi-Fi Dimensional Drawing	51
Figure 3-32	iPad Wi-Fi + 3G Dimensional Drawing	52
Figure 3-33	iPod touch 6th gen. Dimensional Drawing	53
Figure 3-34	iPod touch 5th gen. Dimensional Drawing	54
Figure 3-35	iPod touch 4th gen. Dimensional Drawing	55
Figure 3-36	iPod touch 3rd gen. Fall '09 32GB and 64GB Dimensional Drawing	56
Figure 3-37	iPod touch 2nd gen. 8GB, 16GB, 32GB Dimensional Drawing	57
Figure 3-38	iPod touch Dimensional Drawing	58
Figure 3-39	iPod nano 7th gen. Dimensional Drawing	59
Figure 3-40	iPod nano 6th gen. Dimensional Drawing	60
Figure 3-41	iPod nano 5th gen. Dimensional Drawing	61
Figure 3-42	iPod nano 4th gen. Dimensional Drawing	62
Figure 3-43	iPod nano 3rd gen. Dimensional Drawing	63
Figure 3-44	iPod nano 2nd gen. Dimensional Drawing	64
Figure 3-45	iPod nano Dimensional Drawing	65
Figure 3-46	iPod classic 160GB Dimensional Drawing	66
Figure 3-47	iPod classic 80GB Dimensional Drawing	67
Figure 3-48	iPod 5th gen. 60GB/80GB Dimensional Drawing	68
Figure 3-49	iPod 5th gen. 30GB Dimensional Drawing	69
Figure 3-50	iPod 4th gen. Dimensional Drawing	70
Figure 3-51	iPod 3rd gen. Dimensional Drawing	71
Figure 3-52	iPod photo 30/60GB Dimensional Drawing	72
Figure 3-53	iPod photo Dimensional Drawing	73
Figure 3-54	iPod shuffle 4th gen. Dimensional Drawing	74
Figure 3-55	iPod shuffle 3rd gen. Dimensional Drawing	75
Figure 3-56	iPod shuffle 2nd gen. Dimensional Drawing	76
Figure 3-57	iPod shuffle Dimensional Drawing (1 of 2)	77
Figure 3-58	iPod shuffle Dimensional Drawing (2 of 2)	78
Figure 3-59	iPod mini Dimensional Drawing	79

1. Introduction

Note: These Case Design Guidelines for Apple Devices ('Guidelines') are subject to the terms and conditions set forth on the final page of this document. By downloading, accessing, or otherwise utilizing these Guidelines, you agree to be bound by, and only utilize the Guidelines in accordance with, such terms and conditions.

1.1 Purpose of This Specification

This document presents design guidelines for case accessories that are compatible with Apple devices.

1.2 Requirements and Recommendations

The use of the words *must*, *must not*, *required*, *shall*, *shall not*, *should*, *should not*, *recommended*, *not recommended*, *may*, *optional*, and *deprecated* in a statement have the following meanings:

- *must*, *shall*, or *required* means the statement is an absolute requirement.
- *must not*, *shall not* or *prohibited* means the statement is an absolute prohibition.
- *should* or *recommended* means the full implications must be understood before choosing a different course.
- *should not* or *not recommended* means the full implications must be understood before choosing this course.
- *may* or *optional* means the statement is truly optional, and its presence or absence cannot be assumed.
- *deprecated* means the statement is provided for historical purposes only and is equivalent to 'must not'.

2. Cases

2.1 Product Design

A well-designed case will securely house an Apple device while not interfering with the device's operation. Significant factors in mechanical design include access to the device's sensors, controls, and connectors. The case developer should take into account the minimum and maximum dimensional tolerances of the Apple device(s) it claims compatibility with.

2.1.1 Device Layouts and Dimensions for Apple Devices

Cases must be designed to accommodate the full range of Apple device sizes within each product's dimensional variation. Dimensional drawings with tolerances for all Apple devices can be found in [Device Dimensional Drawings](#) (page 18).

2.1.2 Access to Controls

The case must readily permit the user to access and operate the device's mechanical controls such as, but not limited to:

- volume
- ring/silent controls
- sleep/wake control
- home button

2.1.3 Access to the Headset Jack and 30-pin or Lightning Connector

The case must provide ready access to an Apple device's headset jack. The headset jack opening must be at least 6.0 mm in diameter and at most 14.0 mm deep. At least 6.5 mm in diameter and at most 10.0 mm deep is recommended for best compatibility with a range of headsets.

The case must also provide unobstructed access to either the 30-pin connector or the Lightning connector.

If the case is for an Apple device with the Lightning connector, the opening must be at least 12.05 mm by 6.30 mm with full radii rounded edges. 13.65 mm by 6.85 mm is recommended for best compatibility with a range of cables and docks.

In addition, the headset jack and 30-pin or Lightning connector openings must be designed with enough margin to compensate for shifting or dimensional changes of the case material.

2.1.4 Access to the Smart Connector

Cases that do not make use of the Smart Connector must not expose it.

2.1.5 Device Protection

Cases must protect the Apple device from a 1 m drop onto a hard paved surface in any device orientation.

Specifically, exposed glass on the Apple device must not come within 1 mm of a flat surface, such as a table or floor, in any orientation when the case is attached. This may be achieved by either covering the exposed glass or creating features around it that will space the exposed glass at least 1 mm away from the flat surface.

2.1.6 Cover Glass Contact

Cases that claim compatibility with devices below should not contact the cover glass as defined in their dimensional drawings.

- iPhone 6s Plus
- iPhone 6s
- iPhone 6 Plus
- iPhone 6

See [Device Dimensional Drawings](#) (page 18).

2.1.7 Dock Compatibility

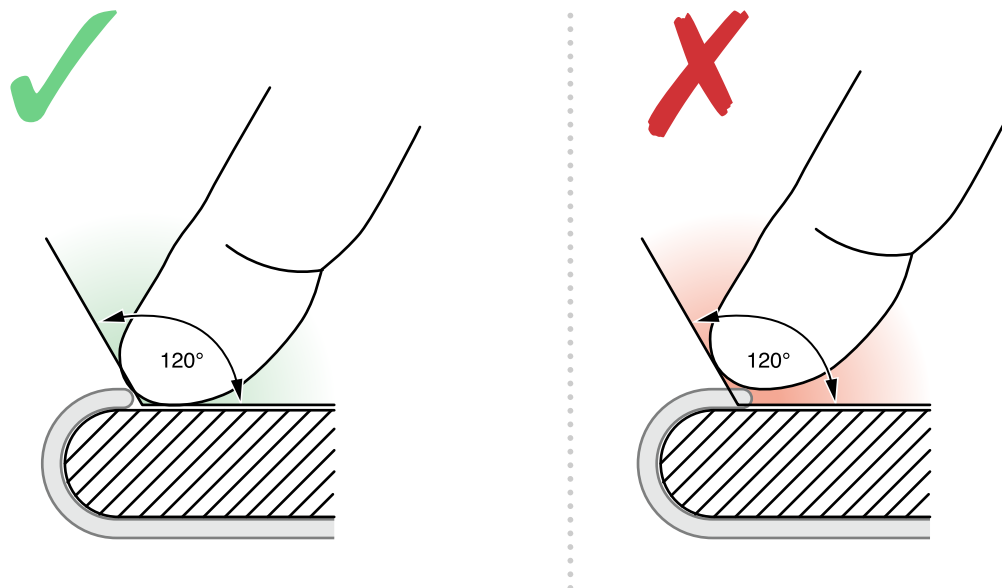
For compatibility with docks, the distance from bottom of the Apple device to the outside of a case should not exceed 1.8 mm.

2.1.8 Touchscreen

The case should permit water droplets to freely roll off the screen when the Apple device is held at a 30 degree angle relative to the horizon.

Cases must allow a 120° opening along the edges of the active area of the touchscreen to ensure compatibility with the Apple device touchscreen features. See [Figure 2-1](#) (page 10) for more information on the keep-out and [Device Dimensional Drawings](#) (page 18) device specific active display areas.

Figure 2-1 Touchscreen Keep-out Area



2.2 Acoustics

The case must not impair or degrade the acoustical performance of an Apple device.

2.2.1 Speaker and Microphone Openings

When Apple devices have speakers or microphones, their locations may vary from model to model. Refer to the dimensional drawings for various Apple devices cited in [Device Layouts and Dimensions for Apple Devices](#) (page 8). The case must not obstruct the speaker or microphone ports.

2.2.2 Speaker to Microphone Coupling

The case must not facilitate the conduction of sound from the speaker to any microphone. Such sound conduction may cause echoing in phone calls.

2.2.3 Call Quality

The case must not impair or degrade the user's experience making and receiving both audio calls over a cellular network or audio/video calls using Apple's FaceTime software. User testing must be conducted in all modes of operation (handset, speakerphone, and headset modes) supported by the Apple device, to confirm that the case does not change the loudness or frequency response of the speakers or microphones. In addition, the user must not be able to detect any sound distortion resulting from enclosing the Apple device in the case.

2.3 Sensors

Cases must be designed so they do not interfere with the operation of the sensors on an Apple device, such as:

- ambient light sensor
- magnetic compass
- proximity sensor
- accelerometer
- three-axis gyroscope

2.3.1 Ambient Light and Proximity Sensor Interference

The ambient light sensor and proximity sensor locations for various Apple devices are shown in the dimensional drawings cited in [Device Dimensional Drawings](#) (page 18). Some of the dimensional drawings specify a recommended keep-out area around these sensors. No material must be allowed to cover these sensors or their keep-out areas, this includes films and privacy screens. Cases that allow the Apple device to slide around must not obstruct any sensors.

2.3.2 Magnetic Interference

Apple recommends avoiding the use of magnets and metal components in cases.

Cases for Apple devices must not affect the device's built-in magnetic compass (if present).

Additionally, iPhone 6s Plus and iPhone 6 Plus have an autofocus rear camera equipped with optical image stabilization that may be affected by magnets and metal components in cases and rear camera accessories. Cases and rear camera accessories that claim compatibility with iPhone 6s Plus and iPhone 6 Plus must not affect operation of the autofocus rear camera.

2.3.3 Touch ID Sensor

Cases for Apple devices that are equipped with Touch ID must not inhibit the use of the device's Touch ID sensor. See [Device Dimensional Drawings](#) (page 18) for specific device keep-outs.

2.4 Camera

The field of view (FOV) of the camera and the illumination provided by the flash is designed for each Apple product. It is imperative that manufacturers consult technical specifications released for each product and do not assume these parameters are shared between products.

Images from the camera may be affected by the geometry, color and surface finish of the camera opening in the case.

2.4.1 Geometry

The camera lens FOV must not be blocked. Making the case opening around the camera too small may block the FOV of the lens. This may cause vignetting in the image, where the corners of are darker than the center. Blocking marginal rays just outside the FOV of the lens may also reduce the sharpness of the image. See [Device Layouts and Dimensions for Apple Devices](#) (page 8) for the detailed mechanical keep-out.

The case opening must not be designed in a way that directs stray light into the camera. If the opening is too narrow or too steep, it may reflect light into the camera, washing out the image or adding an unwanted color cast. Adding a chamfer to the case opening trim may help to direct stray light away from the camera. Additionally, where the product is equipped with a flash, a narrow or steep opening may reflect light from the case opening back into the camera or scene. This may cause the image to appear washed out or contain unwanted artifacts. Designers should ensure that the mechanical keep-outs outlined in the device dimensional drawings ([Device Dimensional Drawings](#) (page 18)) are maintained with worst-case X-Y placement tolerances.

2.4.2 Color

Any light reflected from the case may pick up the color of the case. Black material or black coating may help avoid color bleeding into the camera from an external light source or the flash. The darker the color, the less light may be reflected from the source into the camera.

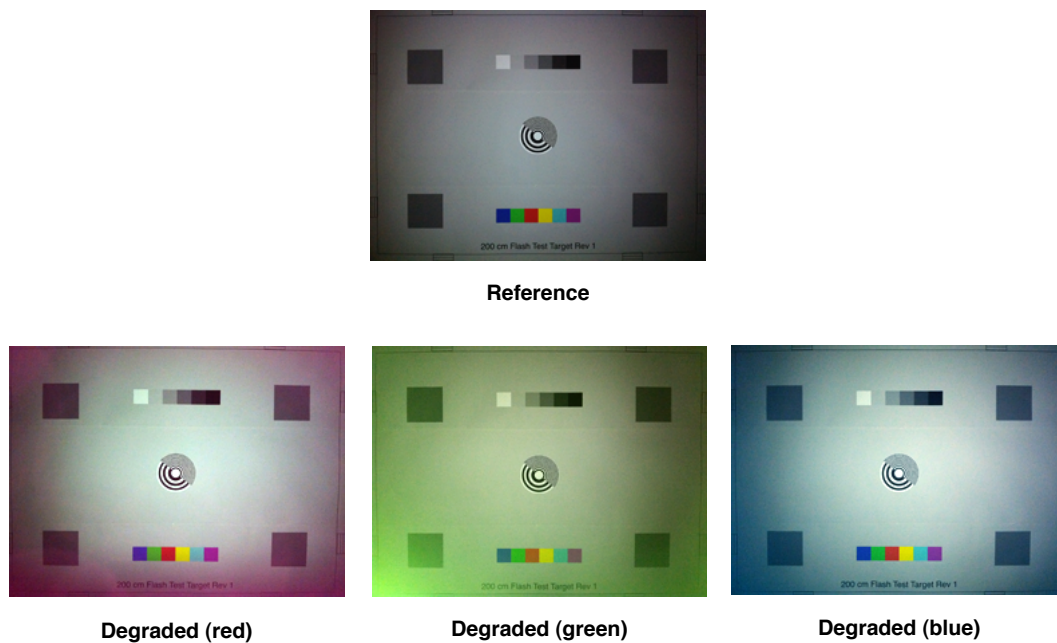
Note: Apple recommends a semi-gloss black material or coating around the camera and flash opening.

2.4.3 Surface Finish

The flash is a strong source of light and reflections from the camera case opening edge should be managed so they do not reflect back into the camera or the scene. Semi-gloss material may direct light away from the camera. Matte or diffuse materials scatter light in all directions and will increase the likelihood that light from the flash or strong sources in the scene is reflected into the camera.

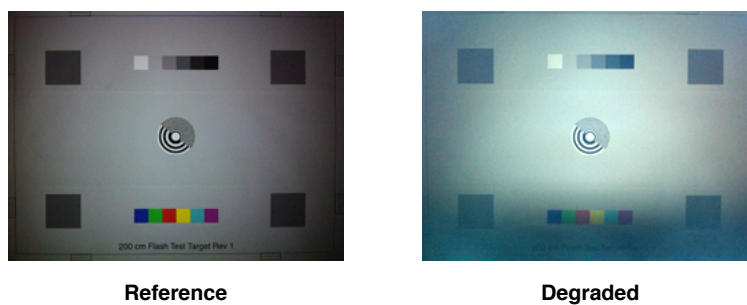
2.4.4 Image Degradation Examples

Figure 2-2 Image degradation by color shifting



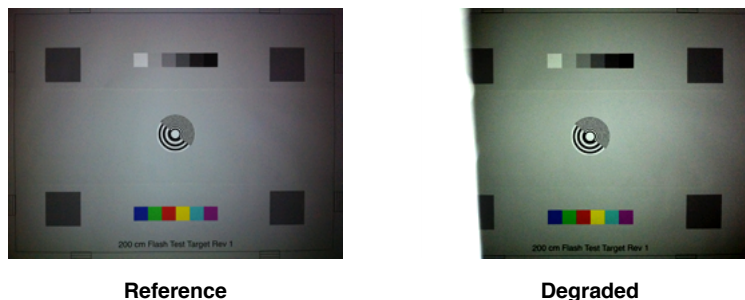
2.4.4.1 Contrast Decrease

Figure 2-3 Image degradation by decrease of contrast



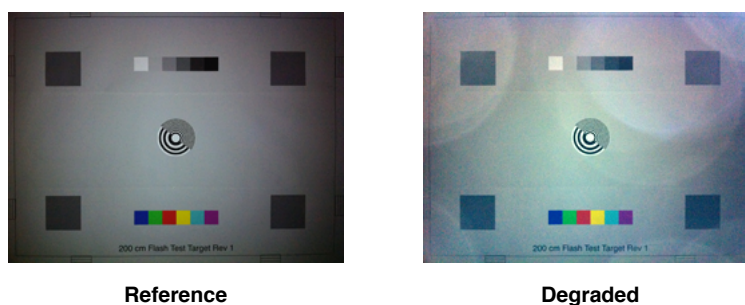
2.4.4.2 Image Blocking

Figure 2-4 Image degradation by blocking



2.4.4.3 Flash Interference

Figure 2-5 Image degradation by flash interference



2.5 Reliability

Cases for Apple devices must be tested to verify that they will withstand long-term use under typical use conditions, and that they do not impair or degrade the functionality of the device, damage it or its immediate surroundings, or adversely affect the user.

2.5.1 Device Insertion and Removal

The case must hold the Apple device securely while permitting its easy insertion and removal. The case and the enclosed device must not be damaged by the repeated insertion and removal of the device from the case under conditions representative of long-term use in a variety of environments.

2.5.2 Colorfastness

Any dyes, inks, or coatings in or on the case must not bleed color onto either the device or its user, particularly while the case is in contact with common substances such as water or sunscreen.

2.6 Environmental

Cases for Apple devices must comply with applicable environmental regulations in the regions in which such cases are to be sold, and any applicable substance or material restrictions, including applicable restrictions on the following substances:

- organic tin compounds, PFOS, PFOA, phthalates, azo dyes, polybrominated biphenyls (PBBs) and PAHs, per requirements of the EU REACH regulation EC 1907/2006
- Nickel leach rate on surfaces in prolonged skin contact, per requirements of the EU REACH regulation EC 1907/2006
- Cadmium, lead, hexavalent chromium, and nickel, per requirements of EU Directive 2009/48/EC
- Natural rubber latex, per requirements of EU Directive EC 93/42/EEC
- Dimethylfumarate (DMFu), per requirements of EU Regulation 412/2012
- pH and Formaldehyde, per requirements of China GB 18401 for textiles and China GB 20400 for leather
- Endangered species of flora and fauna in products or packaging (US Lacey Act) Polybrominated diphenyl ethers (PBDE)

2.7 RF

2.7.1 Materials and Coatings

Cases for Apple devices must not contain materials or coatings that absorb radio frequency energy. Such materials may impair or degrade the performance of cellular communication antennas or GPS, Wi-Fi, or Bluetooth antennas. Examples include (but are not limited to) the following:

- Metals (e.g. steel, aluminum, magnesium, titanium, etc.)
- Plastics with any carbon content
- Plastics with any glass content
- Plastics with metallic plating
- Metallic paints

- Black paints with high carbon loading
- White paints with high titanium dioxide loading Metallic
- Physical Vapor Deposition (PVD) coatings

2.7.2 Near Field Communication (NFC)

Cases that claim compatibility with NFC enabled Apple devices must not degrade device NFC transaction performance. The following Apple devices are NFC enabled:

- iPhone 6s Plus
- iPhone 6s
- iPhone 6 Plus
- iPhone 6

2.8 Touchscreen

The touch interface in an Apple device senses the presence of one or more fingers on its surface. Any material between the surface and the user's hand, even a very thin sheet of plastic, may affect the performance of the touch interface.

2.8.1 Overlay

If a case design requires the Apple device's touchscreen to be covered with an overlay, the overlay must not:

- exceed 0.3 mm in thickness
- introduce air gaps between the touchscreen and overlay
- be electrically conductive

2.8.2 Edge Swipe Gestures

A case must allow the user to easily use edge swipe gestures. These gestures include bringing up Control Center, Notification Center, and swiping back from apps that may use edge swipe gestures (such as the Messages app).

2.8.3 Edge Press Gestures

Cases that claim compatibility with iPhone 6s Plus or iPhone 6s must allow the user to easily use the edge press gesture. This gesture is used to bring up the task switcher in iOS 9.0 and later.

3. Device Dimensional Drawings

This chapter contains the following dimensional drawings:

- [iPhone 6s Plus](#) (page 21)
- [iPhone 6s](#) (page 22)
- [iPhone 6 Plus](#) (page 23)
- [iPhone 6](#) (page 24)
- [iPhone 5s](#) (page 25)
- [iPhone 5c](#) (page 26)
- [iPhone 5](#) (page 27)
- [iPhone 4s](#) (page 28)
- [iPhone 4 \(CDMA model\)](#) (page 29)
- [iPhone 4 \(GSM model\)](#) (page 30)
- [iPhone 3G and iPhone 3GS](#) (page 31)
- [iPhone](#) (page 32)
- [iPad Pro Wi-Fi](#) (page 33)
- [iPad Pro Wi-Fi + Cellular](#) (page 34)
- [iPad mini 4 Wi-Fi](#) (page 35)
- [iPad mini 4 Wi-Fi + Cellular](#) (page 36)
- [iPad Air 2 Wi-Fi](#) (page 37)
- [iPad Air 2 Wi-Fi + Cellular](#) (page 38)
- [iPad mini 2 & 3 Wi-Fi](#) (page 39)
- [iPad mini 2 & 3 Wi-Fi + Cellular](#) (page 40)
- [iPad Air Wi-Fi](#) (page 41)
- [iPad Air Wi-Fi + Cellular](#) (page 42)
- [iPad mini with Wi-Fi](#) (page 43)
- [iPad mini with Wi-Fi + Cellular](#) (page 44)
- [iPad with Wi-Fi \(4th generation\)](#) (page 45)

- [iPad with Wi-Fi + Cellular \(4th generation\)](#) (page 46)
- [iPad with Wi-Fi \(3rd generation\)](#) (page 47)
- [iPad with Wi-Fi + 4G \(3rd generation\)](#) (page 48)
- [iPad 2 with Wi-Fi](#) (page 49)
- [iPad 2 with Wi-Fi + 3G](#) (page 50)
- [iPad with Wi-Fi](#) (page 51)
- [iPad with Wi-Fi + 3G](#) (page 52)
- [iPod touch \(6th generation\)](#) (page 53)
- [iPod touch \(5th generation\)](#) (page 54)
- [iPod touch \(4th generation\)](#) (page 55)
- [iPod touch \(3rd generation\)](#) (page 56)
- [iPod touch \(2nd generation\)](#) (page 57)
- [iPod touch](#) (page 58)
- [iPod nano \(7th generation\)](#) (page 59)
- [iPod nano \(6th generation\)](#) (page 60)
- [iPod nano \(5th generation\)](#) (page 61)
- [iPod nano \(4th generation\)](#) (page 62)
- [iPod nano \(3rd generation\)](#) (page 63)
- [iPod nano \(2nd generation\)](#) (page 64)
- [iPod nano](#) (page 65)
- [iPod classic 160GB](#) (page 66)
- [iPod classic 80GB](#) (page 67)
- [iPod \(5th generation\) 60GB/80GB](#) (page 68)
- [iPod \(5th generation\) 30GB](#) (page 69)
- [iPod \(4th generation\)](#) (page 70)
- [iPod \(3rd generation\)](#) (page 71)
- [iPod photo 30GB/60GB](#) (page 72)
- [iPod photo](#) (page 73)
- [iPod shuffle \(4th generation\)](#) (page 74)
- [iPod shuffle \(3rd generation\)](#) (page 75)
- [iPod shuffle \(2nd generation\)](#) (page 76)

- [iPod shuffle](#) (page 77)
- [iPod mini](#) (page 79)

Figure 3-1 iPhone 6s Plus Dimensional Drawing

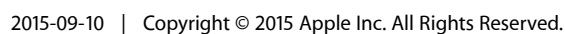


Figure 3-2 iPhone 6s Dimensional Drawing

Figure 3-2 iPhone 6s Dimensional Drawing

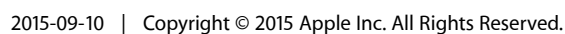


Figure 3-3 iPhone 6 Plus Dimensional Drawing

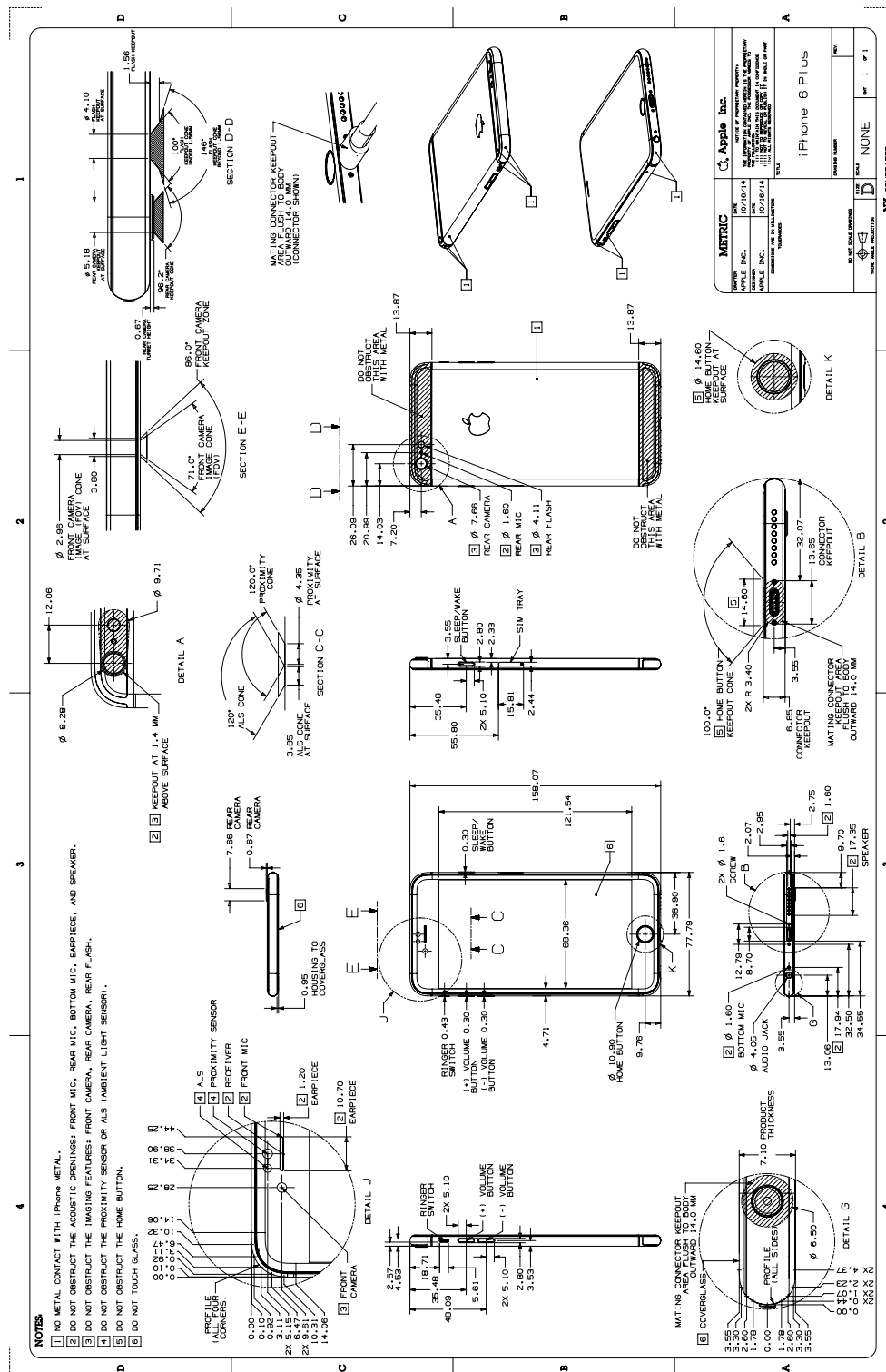


Figure 3-4 iPhone 6 Dimensional Drawing

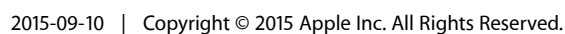


Figure 3-5 iPhone 5s Dimensional Drawing

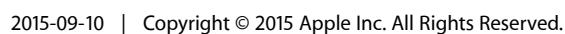


Figure 3-6 iPhone 5c Dimensional Drawing

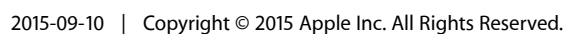
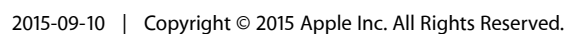


Figure 3-7 iPhone 5 Dimensional Drawing



[illegible]

NOTES:

1. NO METAL CONTACT WITH IPHONE 4 METAL BAND.
2. DO NOT OBSTRUCT THE ACOUSTIC OPENINGS: MIC 1, MIC 2, RECEIVER, AND SPEAKER.
3. DO NOT OBSTRUCT THE IMAGING FEATURES: FRONT CAMERA, SMP REAR CAMERA, LED FLASH.
4. DO NOT OBSTRUCT THE ALS/PROXIMITY SENSOR.

Table 1: Dimensions (mm)

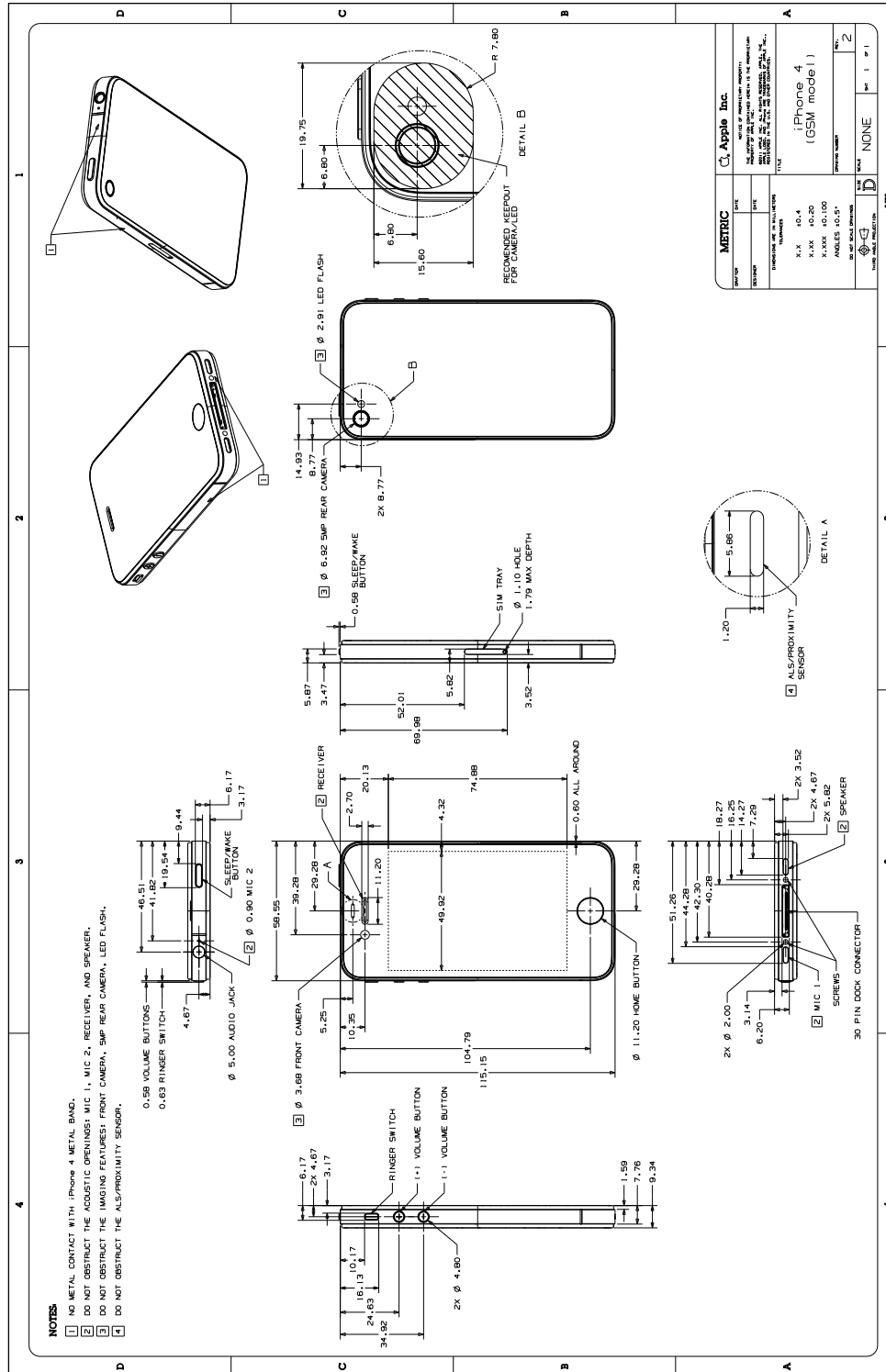
View	Feature	Dimension (mm)
Top View (A)	Overall Width	76.2
	Overall Height	150.0
	Front Camera	2.0
	Rear Camera	5.0
	LED Flash	2.9
	Volume Buttons	12.5
	Home Button	11.2
	Microphone	2.0
	Speaker	3.5
	ALS/Proximity Sensor	5.8
Front View (B)	Overall Width	76.2
	Overall Height	150.0
	Front Camera	2.0
	Rear Camera	5.0
	LED Flash	2.9
	Volume Buttons	12.5
	Home Button	11.2
	Microphone	2.0
	Speaker	3.5
	ALS/Proximity Sensor	5.8
Back View (C)	Overall Width	76.2
	Overall Height	150.0
	Front Camera	2.0
	Rear Camera	5.0
	LED Flash	2.9
	Volume Buttons	12.5
	Home Button	11.2
	Microphone	2.0
	Speaker	3.5
	ALS/Proximity Sensor	5.8

Table 2: Materials

Part	Material
Front Case	Aluminum
Rear Case	Aluminum
Volume Buttons	Plastic
Home Button	Plastic
Microphone	Plastic
Speaker	Plastic
ALS/Proximity Sensor	Plastic

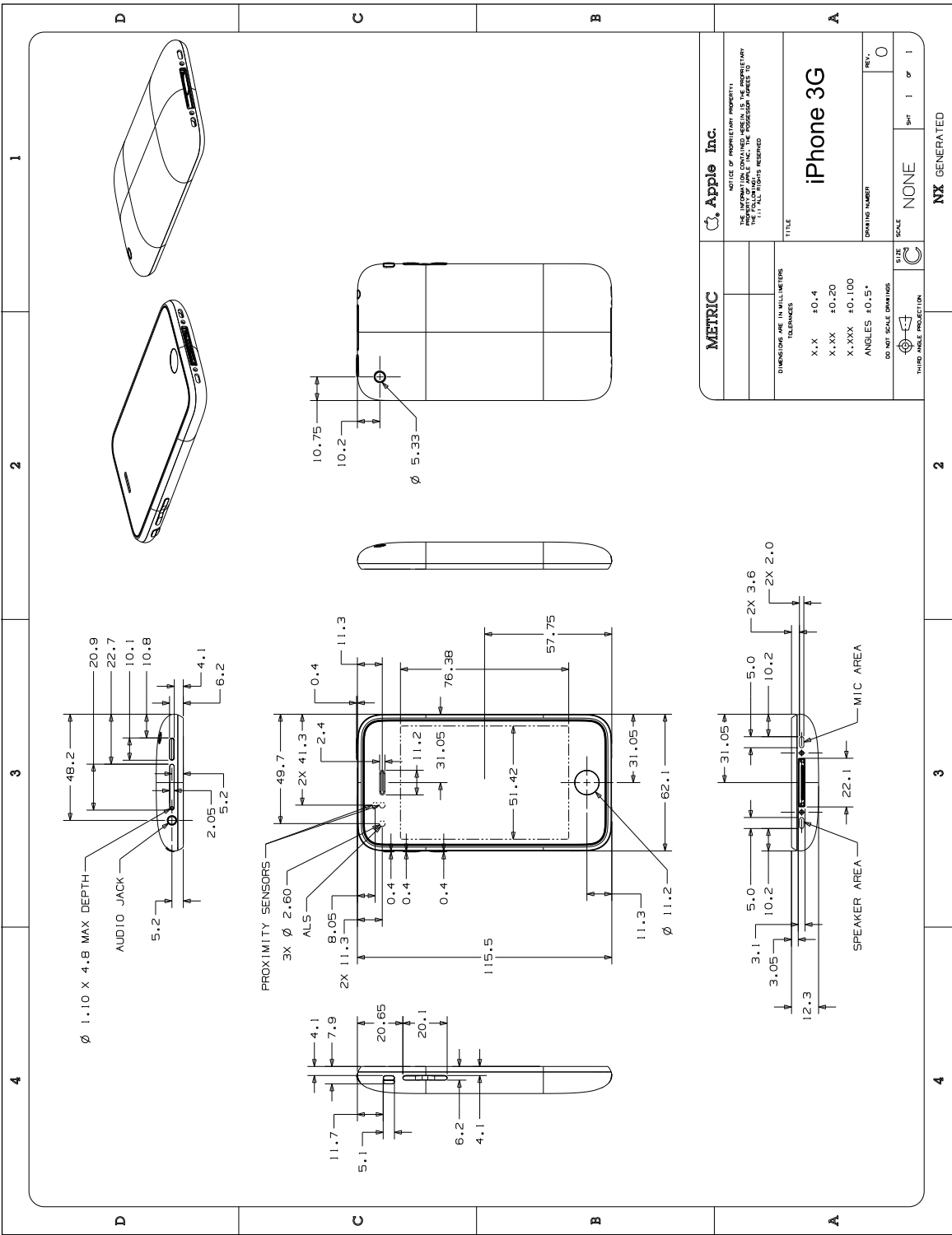
3.10 iPhone 4 (GSM model)

Figure 3-10 iPhone 4 GSM Dimensional Drawing



3.11 iPhone 3G and iPhone 3GS

Figure 3-11 iPhone 3G and iPhone 3GS Dimensional Drawing



[illegible]

3.13 iPad Pro Wi-Fi

Figure 3-13 iPad Pro Wi-Fi Dimensional Drawing

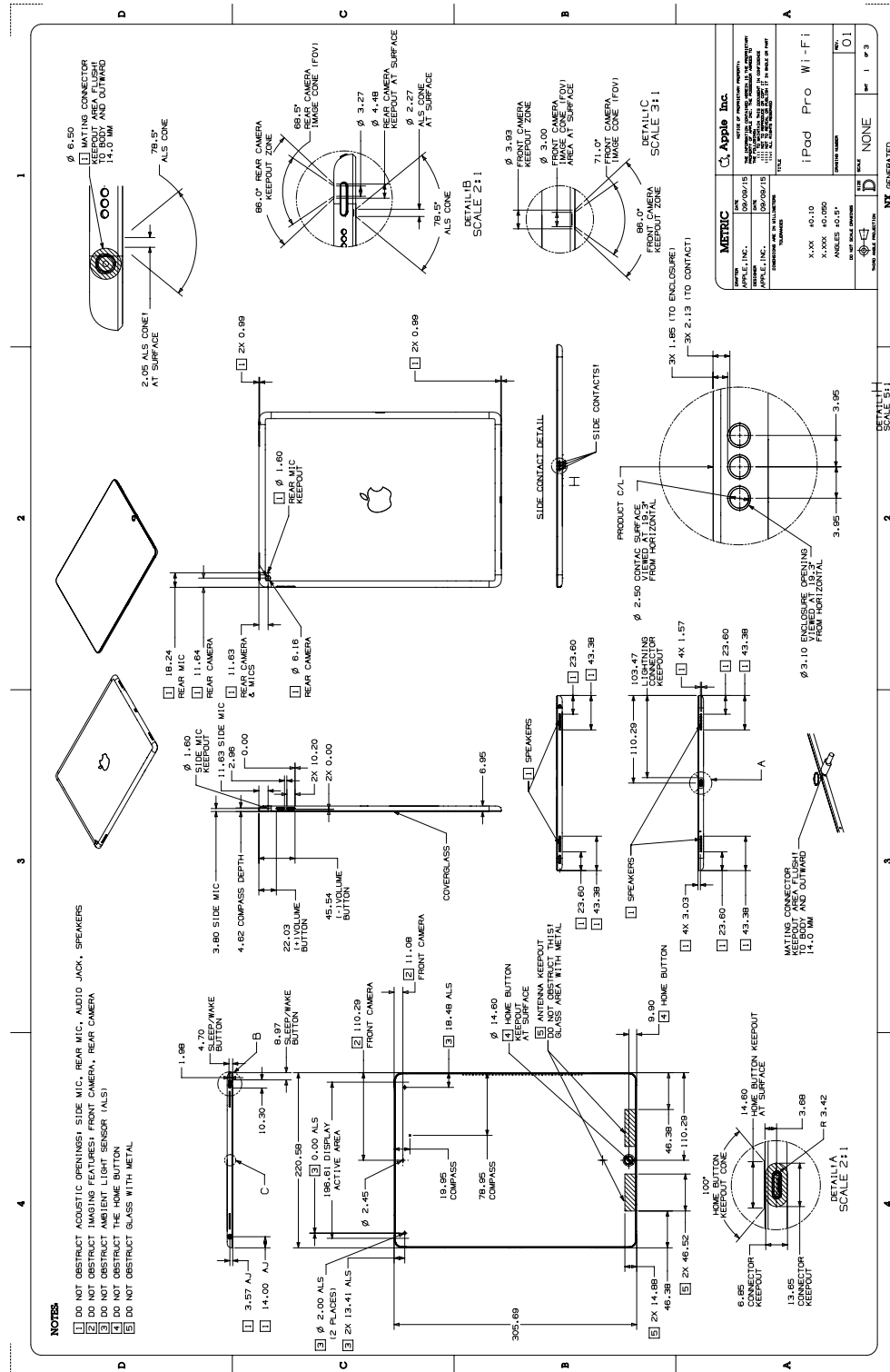
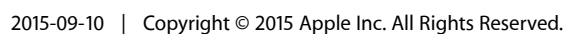
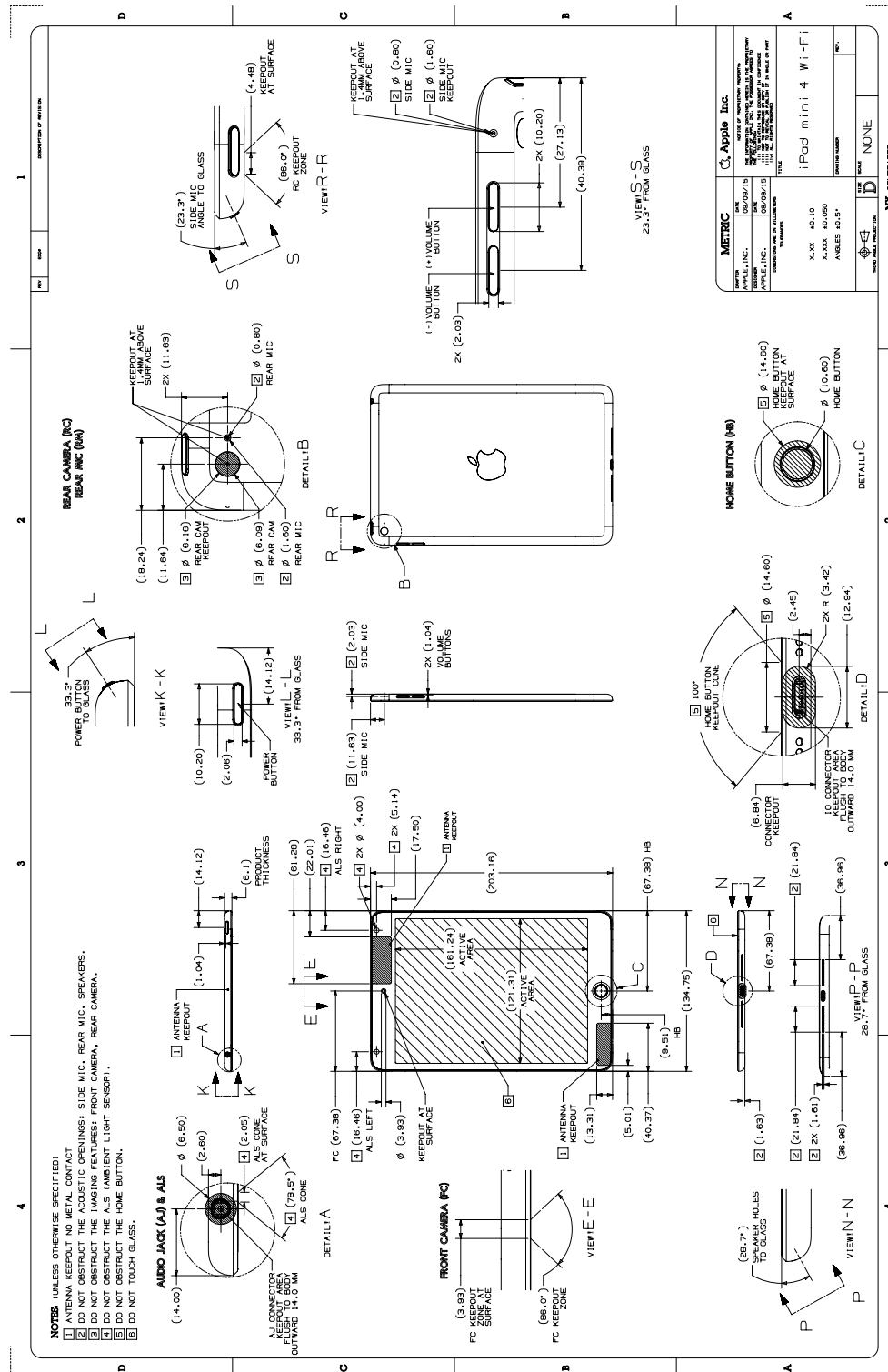


Figure 3-14 iPad Pro Wi-Fi + Cellular Dimensional Drawing



3.15 iPad mini 4 Wi-Fi

Figure 3-15 iPad mini 4 Wi-Fi Dimensional Drawing



NOTES (UNLESS OTHERWISE SPECIFIED):

- ANTENNA KEYPUT NO METAL CONTACT
- DO NOT OBTURUSATE THE FOLLOWING DIMENSIONS: SIDE MIC, REAR MIC, SPEAKERS.
- DO NOT OBTURUSATE THE IMAGING FEATURES: FRONT CAMERA, REAR CAMERA.
- DO NOT OBTURUSATE THE ALS (AMBIENT LIGHT SENSOR).
- DO NOT OBTURUSATE THE HOME BUTTON.
- DO NOT TOUCH GLASS.

REAR CAMERA (RC) REAR MIC (RM)

VIEW K-K

VIEW L-L

VIEW M-M

VIEW N-N

VIEW O-O

VIEW P-P

VIEW Q-Q

VIEW R-R

VIEW S-S

VIEW T-T

VIEW U-U

VIEW V-V

VIEW W-W

VIEW X-X

VIEW Y-Y

VIEW Z-Z

VIEW AA-AA

VIEW BB-BB

VIEW CC-CC

VIEW DD-DD

VIEW EE-EE

VIEW FF-FF

VIEW GG-GG

VIEW HH-HH

VIEW II-II

VIEW JJ-JJ

VIEW KK-KK

VIEW LL-LL

VIEW MM-MM

VIEW NN-NN

VIEW OO-OO

VIEW PP-PP

VIEW QQ-QQ

VIEW RR-RR

VIEW SS-SS

VIEW TT-TT

VIEW UU-UU

VIEW VV-VV

VIEW WW-WW

VIEW XX-XX

VIEW YY-YY

VIEW ZZ-ZZ

VIEW AA-AA

VIEW BB-BB

VIEW CC-CC

VIEW DD-DD

VIEW EE-EE

VIEW FF-FF

VIEW GG-GG

VIEW HH-HH

VIEW II-II

VIEW JJ-JJ

VIEW KK-KK

VIEW LL-LL

VIEW MM-MM

VIEW NN-NN

VIEW OO-OO

VIEW PP-PP

VIEW QQ-QQ

VIEW RR-RR

VIEW SS-SS

VIEW TT-TT

VIEW UU-UU

VIEW VV-VV

VIEW WW-WW

VIEW XX-XX

VIEW YY-YY

VIEW ZZ-ZZ

VIEW AA-AA

VIEW BB-BB

VIEW CC-CC

VIEW DD-DD

VIEW EE-EE

VIEW FF-FF

VIEW GG-GG

VIEW HH-HH

VIEW II-II

VIEW JJ-JJ

VIEW KK-KK

VIEW LL-LL

VIEW MM-MM

VIEW NN-NN

VIEW OO-OO

VIEW PP-PP

VIEW QQ-QQ

VIEW RR-RR

VIEW SS-SS

VIEW TT-TT

VIEW UU-UU

VIEW VV-VV

VIEW WW-WW

VIEW XX-XX

VIEW YY-YY

VIEW ZZ-ZZ

VIEW AA-AA

VIEW BB-BB

VIEW CC-CC

VIEW DD-DD

VIEW EE-EE

VIEW FF-FF

VIEW GG-GG

VIEW HH-HH

VIEW II-II

VIEW JJ-JJ

VIEW KK-KK

VIEW LL-LL

VIEW MM-MM

VIEW NN-NN

VIEW OO-OO

VIEW PP-PP

VIEW QQ-QQ

VIEW RR-RR

VIEW SS-SS

VIEW TT-TT

VIEW UU-UU

VIEW VV-VV

VIEW WW-WW

VIEW XX-XX

VIEW YY-YY

VIEW ZZ-ZZ

VIEW AA-AA

VIEW BB-BB

VIEW CC-CC

VIEW DD-DD

VIEW EE-EE

VIEW FF-FF

VIEW GG-GG

VIEW HH-HH

VIEW II-II

VIEW JJ-JJ

VIEW KK-KK

VIEW LL-LL

VIEW MM-MM

VIEW NN-NN

VIEW OO-OO

VIEW PP-PP

VIEW QQ-QQ

VIEW RR-RR

VIEW SS-SS

VIEW TT-TT

VIEW UU-UU

VIEW VV-VV

VIEW WW-WW

VIEW XX-XX

VIEW YY-YY

VIEW ZZ-ZZ

VIEW AA-AA

VIEW BB-BB

VIEW CC-CC

VIEW DD-DD

VIEW EE-EE

VIEW FF-FF

VIEW GG-GG

VIEW HH-HH

VIEW II-II

VIEW JJ-JJ

VIEW KK-KK

VIEW LL-LL

VIEW MM-MM

VIEW NN-NN

VIEW OO-OO

VIEW PP-PP

VIEW QQ-QQ

VIEW RR-RR

VIEW SS-SS

VIEW TT-TT

VIEW UU-UU

VIEW VV-VV

VIEW WW-WW

VIEW XX-XX

VIEW YY-YY

VIEW ZZ-ZZ

VIEW AA-AA

VIEW BB-BB

VIEW CC-CC

VIEW DD-DD

VIEW EE-EE

VIEW FF-FF

VIEW GG-GG

VIEW HH-HH

VIEW II-II

VIEW JJ-JJ

VIEW KK-KK

VIEW LL-LL

VIEW MM-MM

VIEW NN-NN

VIEW OO-OO

VIEW PP-PP

VIEW QQ-QQ

VIEW RR-RR

VIEW SS-SS

VIEW TT-TT

VIEW UU-UU

VIEW VV-VV

VIEW WW-WW

VIEW XX-XX

VIEW YY-YY

VIEW ZZ-ZZ

VIEW AA-AA

VIEW BB-BB

VIEW CC-CC

VIEW DD-DD

VIEW EE-EE

VIEW FF-FF

VIEW GG-GG

VIEW HH-HH

VIEW II-II

VIEW JJ-JJ

VIEW KK-KK

VIEW LL-LL

VIEW MM-MM

VIEW NN-NN

VIEW OO-OO

VIEW PP-PP

VIEW QQ-QQ

VIEW RR-RR

VIEW SS-SS

VIEW TT-TT

VIEW UU-UU

VIEW VV-VV

VIEW WW-WW

VIEW XX-XX

VIEW YY-YY

VIEW ZZ-ZZ

VIEW AA-AA

VIEW BB-BB

VIEW CC-CC

VIEW DD-DD

VIEW EE-EE

VIEW FF-FF

VIEW GG-GG

VIEW HH-HH

VIEW II-II

VIEW JJ-JJ

VIEW KK-KK

VIEW LL-LL

VIEW MM-MM

VIEW NN-NN

VIEW OO-OO

VIEW PP-PP

VIEW QQ-QQ

VIEW RR-RR

VIEW SS-SS

VIEW TT-TT

VIEW UU-UU

VIEW VV-VV

VIEW WW-WW

VIEW XX-XX

VIEW YY-YY

VIEW ZZ-ZZ

VIEW AA-AA

VIEW BB-BB

VIEW CC-CC

VIEW DD-DD

VIEW EE-EE

VIEW FF-FF

VIEW GG-GG

VIEW HH-HH

VIEW II-II

VIEW JJ-JJ

VIEW KK-KK

VIEW LL-LL

VIEW MM-MM

VIEW NN-NN

VIEW OO-OO

VIEW PP-PP

VIEW QQ-QQ

VIEW RR-RR

VIEW SS-SS

VIEW TT-TT

VIEW UU-UU

VIEW VV-VV

VIEW WW-WW

VIEW XX-XX

VIEW YY-YY

VIEW ZZ-ZZ

VIEW AA-AA

VIEW BB-BB

VIEW CC-CC

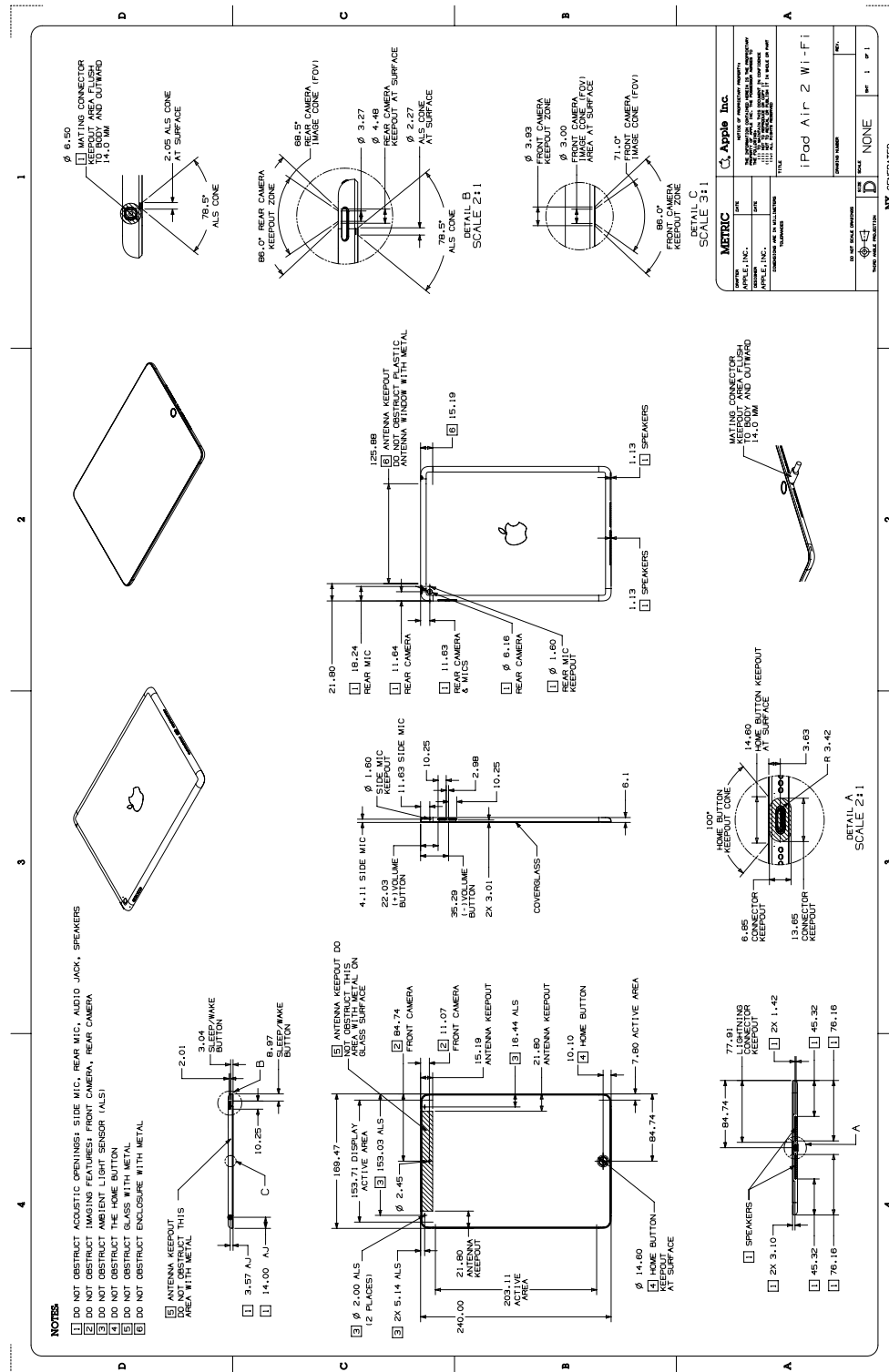
VIEW DD-DD

VIEW EE-EE

VIEW FF-FF

3.17 iPad Air 2 Wi-Fi

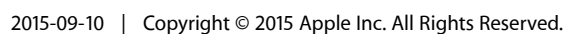
Figure 3-17 iPad Air 2 Wi-Fi Dimensional Drawing



[illegible]

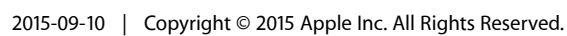
Figure 3-19 iPad mini 2 & iPad mini 3 Wi-Fi Dimensional Drawing

Figure 3-19 iPad mini 2 & iPad mini 3 Wi-Fi Dimensional Drawing



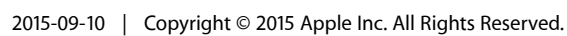
[illegible]

Figure 3-21 iPad Air Wi-Fi Dimensional Drawing



[illegible]

Figure 3-23 iPad mini with Wi-Fi Dimensional Drawing



NOTES (UNLESS OTHERWISE SPECIFIED)

1 DESCRIPTION OF PRODUCT

2

3

4

5

6

7

8

9

10

11

12

13

14

15

16

17

18

19

20

21

22

23

24

25

26

27

28

29

30

31

32

33

34

35

36

37

38

39

40

41

42

43

44

45

46

47

48

49

50

51

52

53

54

55

56

57

58

59

60

61

62

63

64

65

66

67

68

69

70

71

72

73

74

75

76

77

78

79

80

81

82

83

84

85

86

87

88

89

90

91

92

93

94

95

96

97

98

99

100

101

102

103

104

105

106

107

108

109

110

111

112

113

114

115

116

117

118

119

120

121

122

123

124

125

126

127

128

129

130

131

132

133

134

135

136

137

138

139

140

141

142

143

144

145

146

147

148

149

150

151

152

153

154

155

156

157

158

159

160

161

162

163

164

165

166

167

168

169

170

171

172

173

174

175

176

177

178

179

180

181

182

183

184

185

186

187

188

189

190

191

192

193

194

195

196

197

198

199

200

201

202

203

204

205

206

207

208

209

210

211

212

213

214

215

216

217

218

219

220

221

222

223

224

225

226

227

228

229

230

231

232

233

234

235

236

237

238

239

240

241

242

243

244

245

246

247

248

249

250

251

252

253

254

255

256

257

258

259

260

261

262

263

264

265

266

267

268

269

270

271

272

273

274

275

276

277

278

279

280

281

282

283

284

285

286

287

288

289

290

291

292

293

294

295

296

297

298

299

300

301

302

303

304

305

306

307

308

309

310

311

312

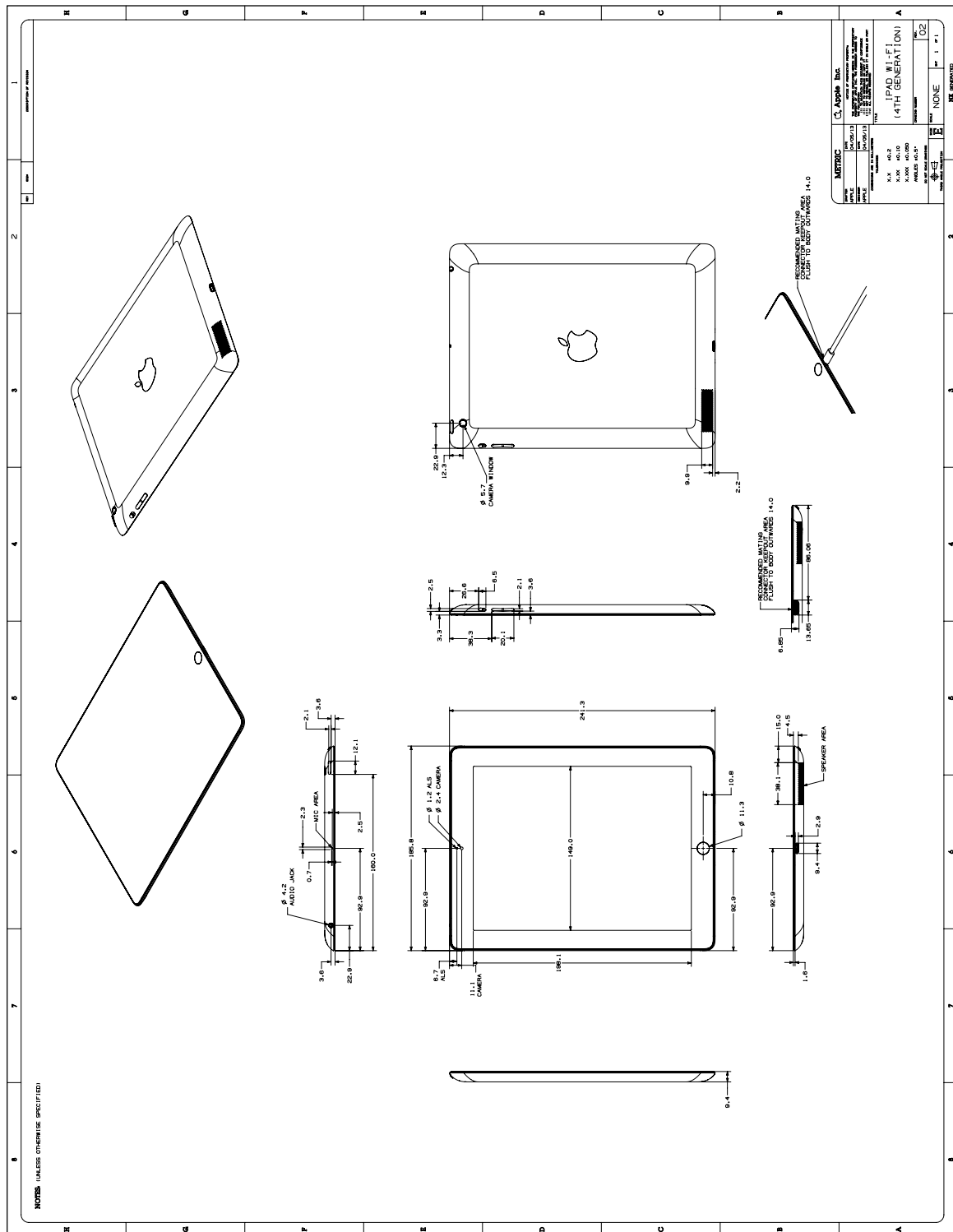
313

314

315</

3.25 iPad with Wi-Fi (4th generation)

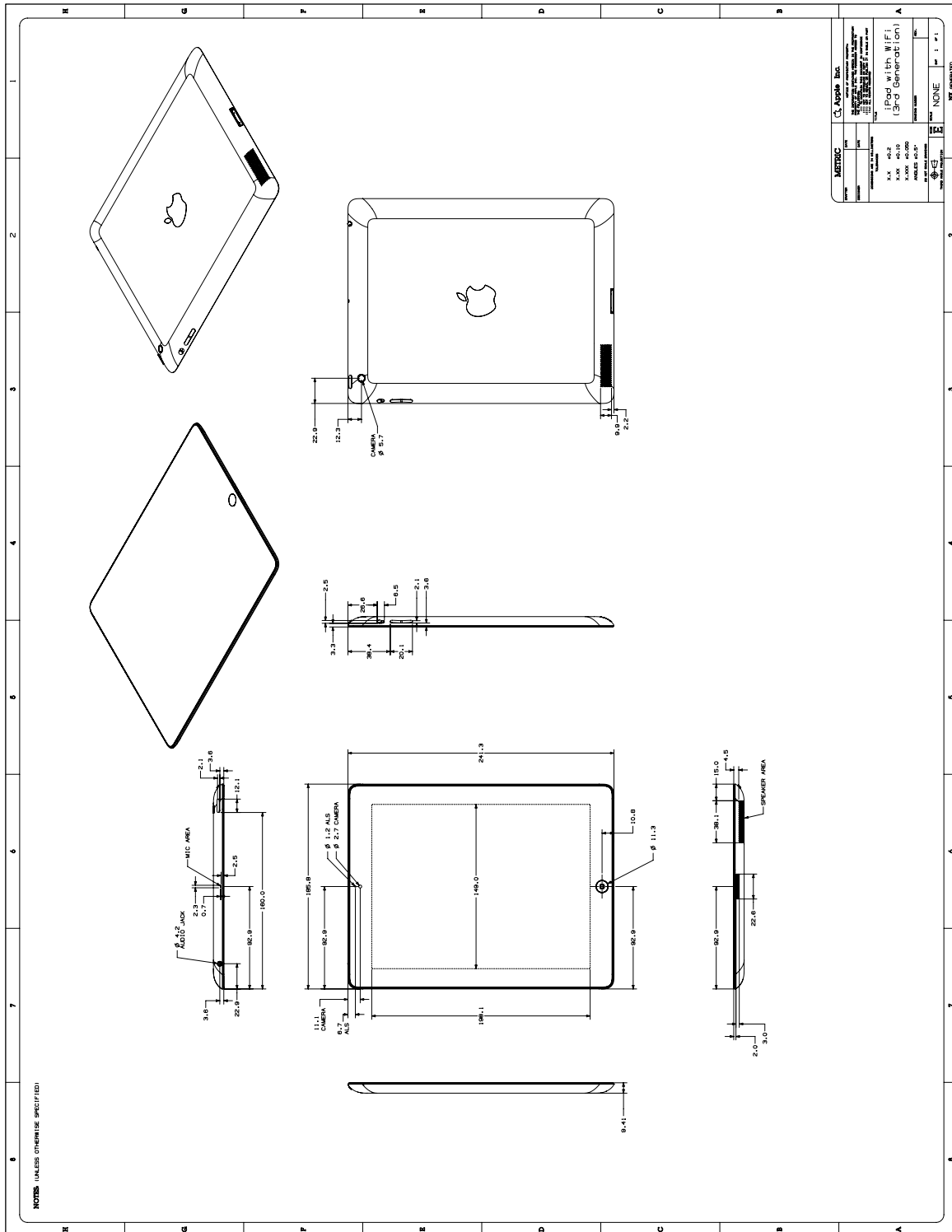
Figure 3-25 iPad Wi-Fi (4th generation) Dimensional Drawing



[illegible]

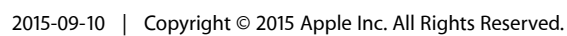
3.27 iPad with Wi-Fi (3rd generation)

Figure 3-27 iPad Wi-Fi (3rd Generation) Dimensional Drawing



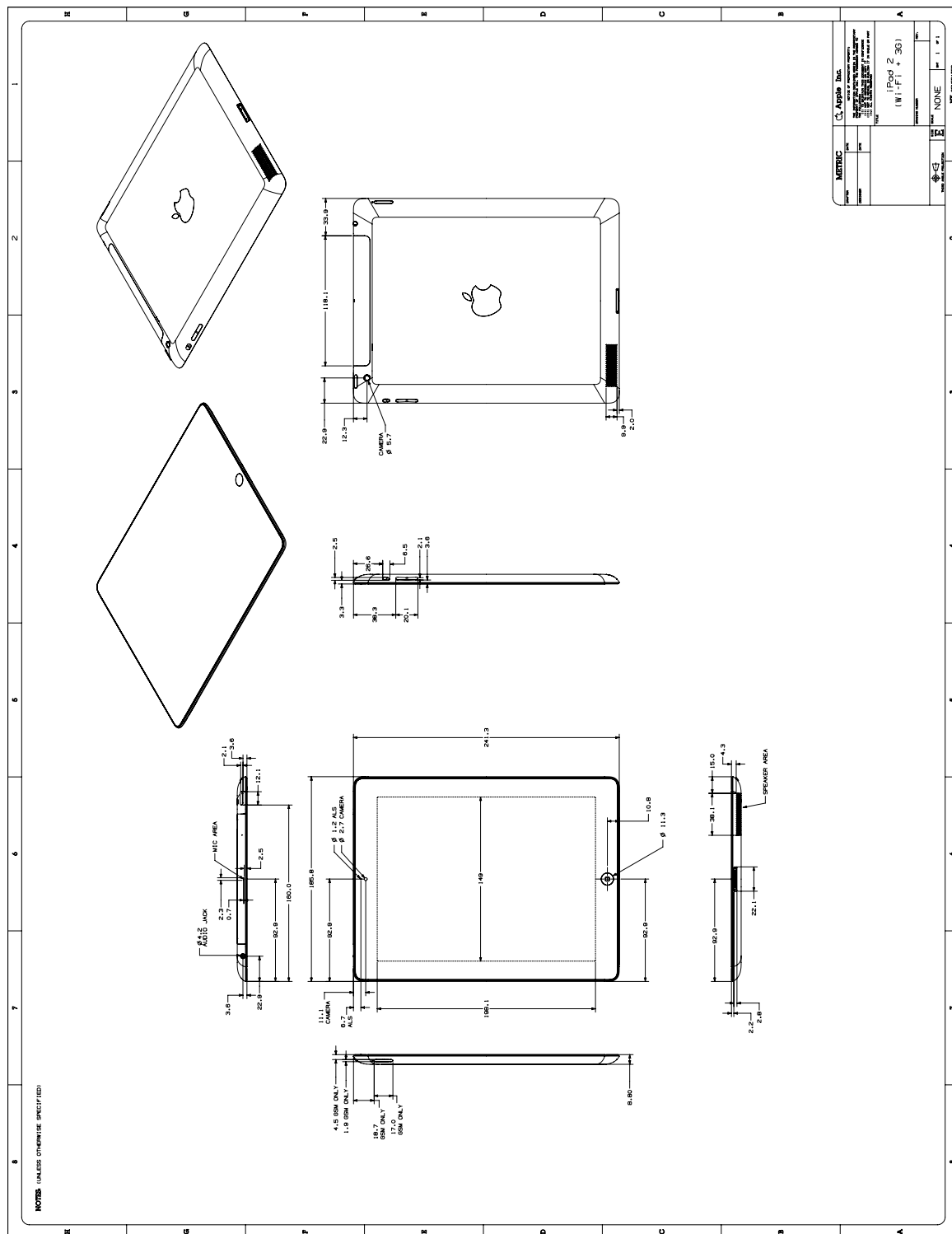
[illegible]

Figure 3-29 iPad 2 Wi-Fi Dimensional Drawing



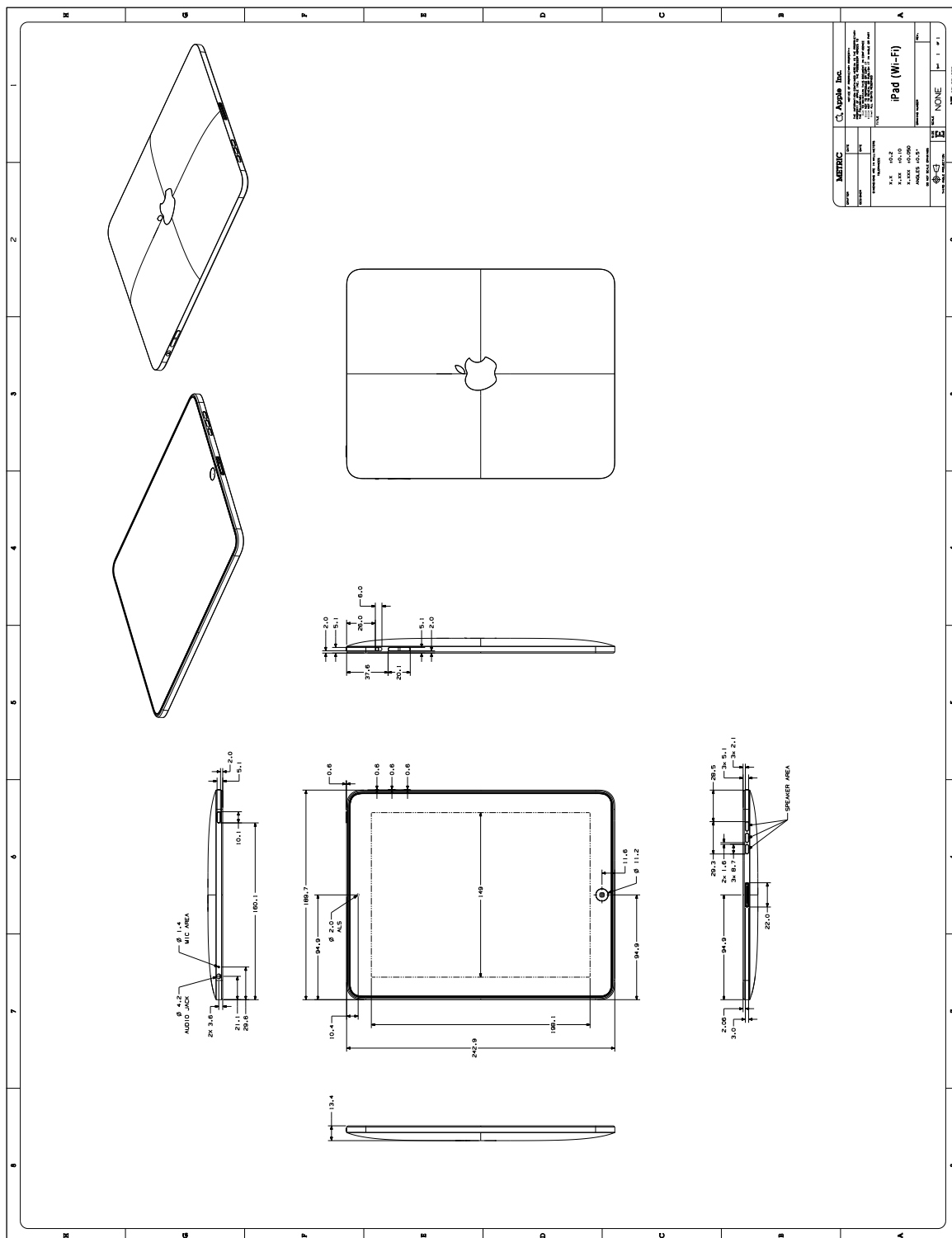
3.30 iPad 2 with Wi-Fi + 3G

Figure 3-30 iPad 2 Wi-Fi + 3G Dimensional Drawing



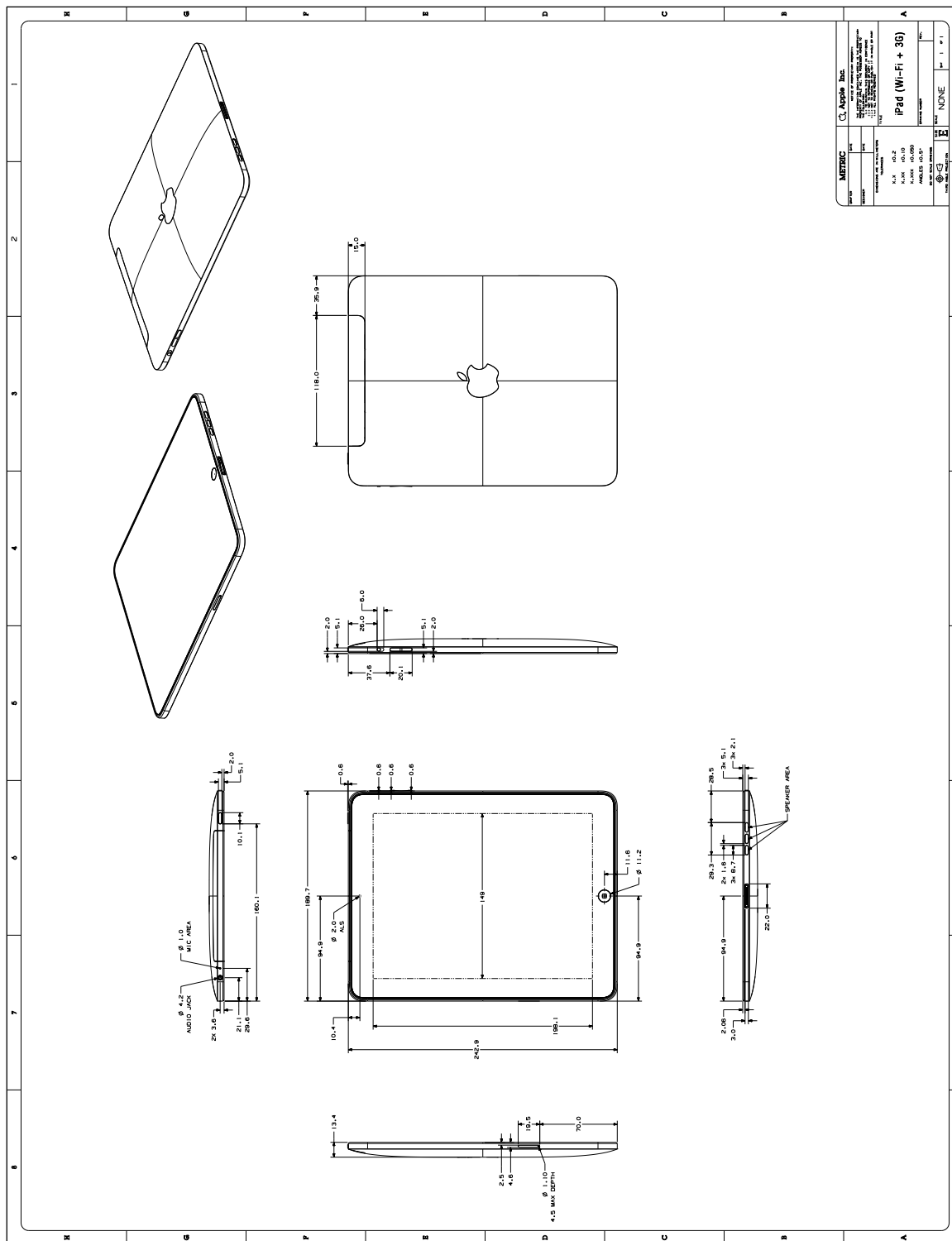
3.31 iPad with Wi-Fi

Figure 3-31 iPad Wi-Fi Dimensional Drawing



3.32 iPad with Wi-Fi + 3G

Figure 3-32 iPad Wi-Fi + 3G Dimensional Drawing



[illegible]

1

2

3

4

5

6

7

8

9

10

11

12

13

14

15

16

17

18

19

20

21

22

23

24

25

26

27

28

29

30

31

32

33

34

35

36

37

38

39

40

41

42

43

44

45

46

47

48

49

50

51

52

53

54

55

56

57

58

59

60

61

62

63

64

65

66

67

68

69

70

71

72

73

74

75

76

77

78

79

80

81

82

83

84

85

86

87

88

89

90

91

92

93

94

95

96

97

98

99

100

101

102

103

104

105

106

107

108

109

110

111

112

113

114

115

116

117

118

119

120

121

122

123

124

125

126

127

128

129

130

131

132

133

134

135

136

137

138

139

140

141

142

143

144

145

146

147

148

149

150

151

152

153

154

155

156

157

158

159

160

161

162

163

164

165

166

167

168

169

170

171

172

173

174

175

176

177

178

179

180

181

182

183

184

185

186

187

188

189

190

191

192

193

194

195

196

197

198

199

200

201

202

203

204

205

206

207

208

209

210

211

212

213

214

215

216

217

218

219

220

221

222

223

224

225

226

227

228

229

230

231

232

233

234

235

236

237

238

239

240

241

242

243

244

245

246

247

248

249

250

251

252

253

254

255

256

257

258

259

260

261

262

263

264

265

266

267

268

269

270

271

272

273

274

275

276

277

278

279

280

281

282

283

284

285

286

287

288

289

290

291

292

293

294

295

296

297

298

299

300

301

302

303

304

305

306

307

308

309

310

311

312

313

314

315

316

317

318

319

320

321

322

323

324

325

326

327

328

329

330

331

332

333

334

335

336

337

338

339

340

341

342

343

344

345

346

347

348

349

350

351

352

353

354

355

356

357

358

359

360

361

362

363

364

365

366

367

368

369

370

371

372

373

374

375

376

377

378

379

380

381

382

383

384

385

386

387

388

389

390

391

392

393

394

395

396

397

398

399

400

401

402

403

404

405

406

407

408

409

410

411

412

413

414

415

416

417

418

419

420

421

422

423

424

425

426

427

428

429

430

431

432

433

434

435

436

437

438

439

440

441

442

443

444

445

446

447

448

449

450

451

452

453

454

455

456

457

458

459

460

461

462

463

464

465

466

467

468

469

470

471

472

473

474

475

476

477

478

479

480

481

482

483

484

485

486

487

488

489

490

491

492

493

494

495

496

497

498

499

500

501

502

503

504

505

506

507

508

509

510

511

512

513

514

515

516

517

518

519

520

521

522

523

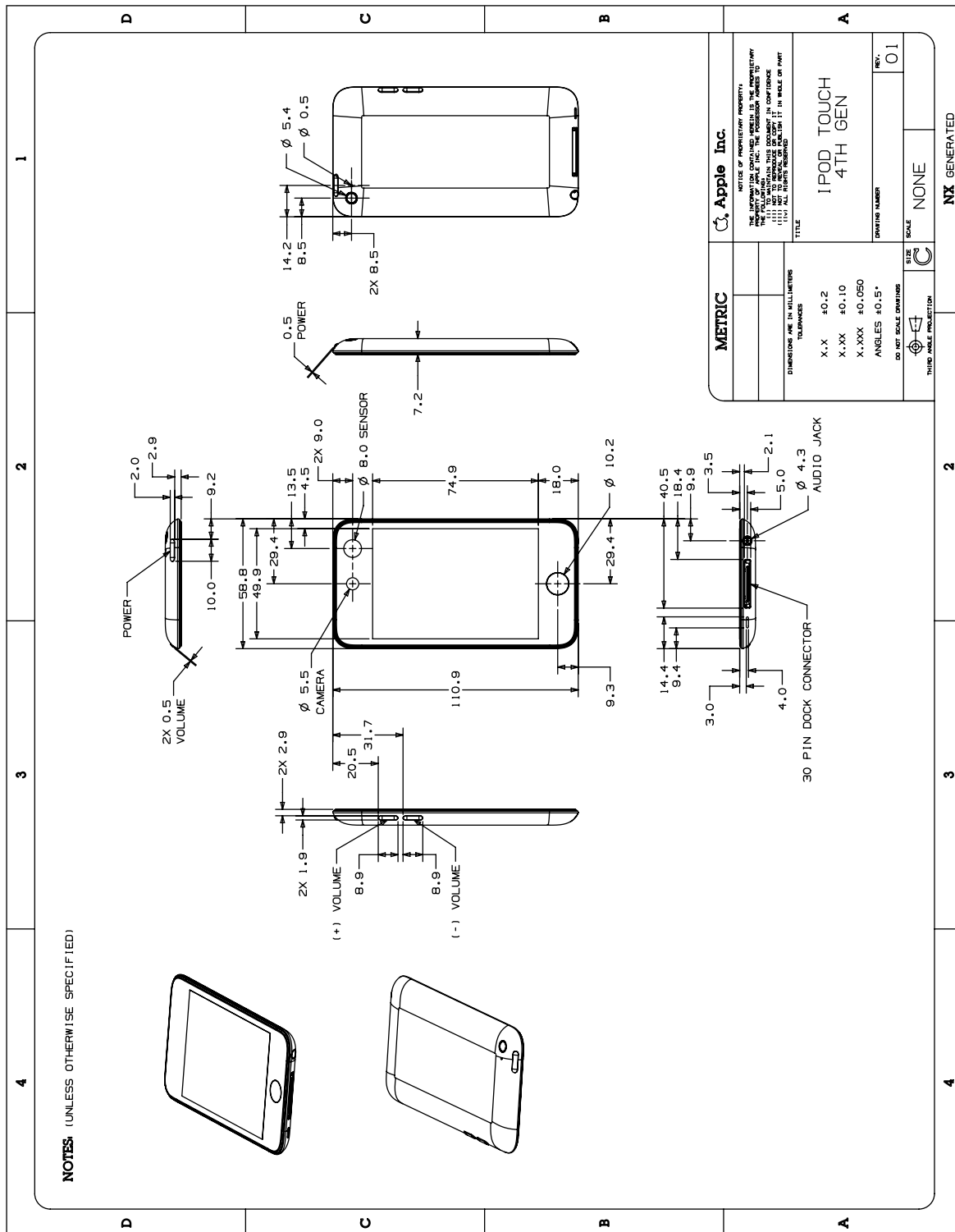
524

525

52

3.35 iPod touch (4th generation)

Figure 3-35 iPod touch 4th gen. Dimensional Drawing



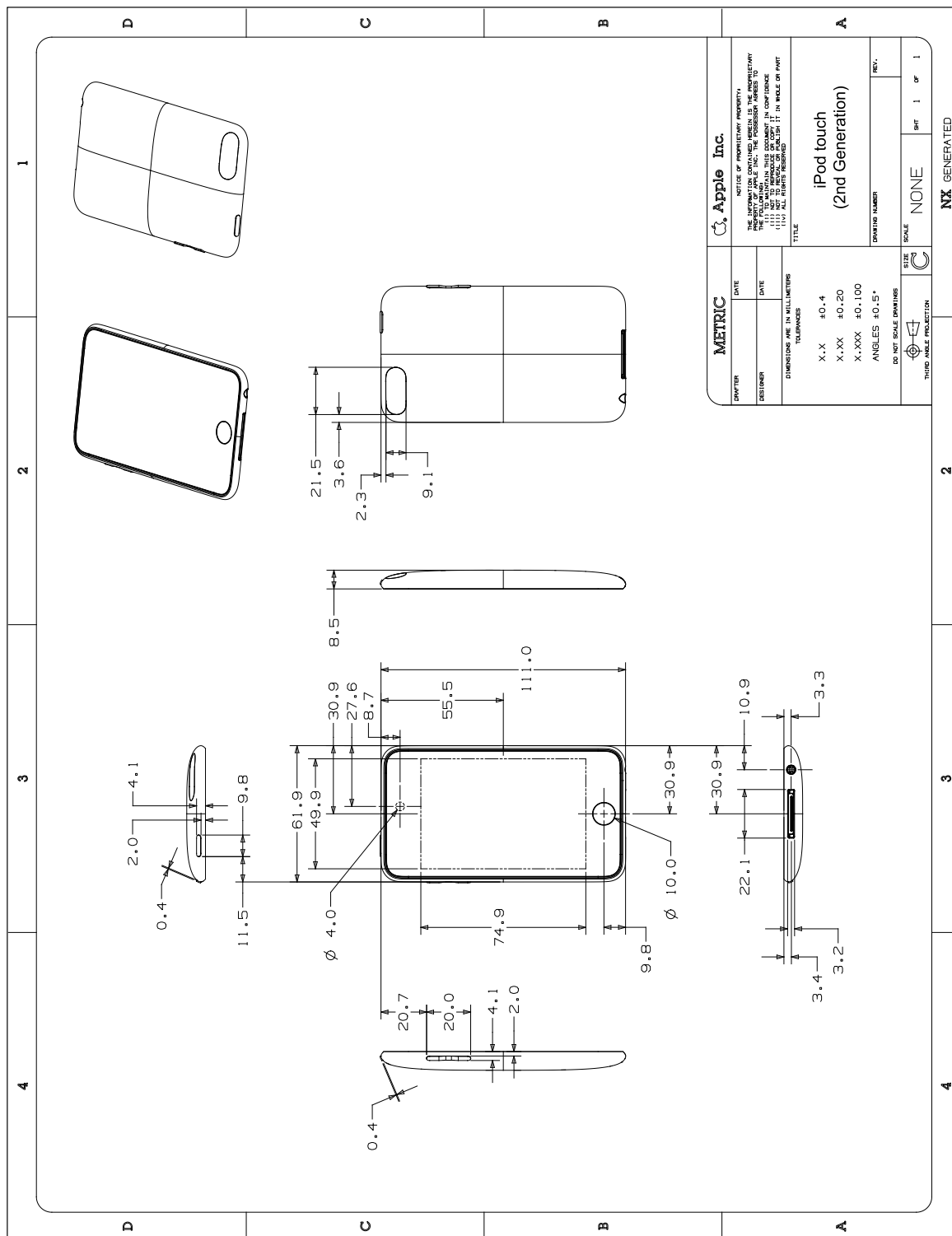
NOTES: (UNLESS OTHERWISE SPECIFIED)

Technical drawing of the iPod touch 32GB and 64GB Fall 2009. The drawing includes four views: A (Front View), B (Back View), C (Top View), and D (Bottom View). View A shows the front face with dimensions for the screen (111.0 mm), home button (30.9 mm), and various holes. View B shows the back face with the camera lens (3.6 mm) and flash. View C shows the top face with the earpiece (3.6 mm) and microphone. View D shows the bottom face with the dock connector (11.4 mm) and volume buttons. The drawing also includes a detailed view of the dock connector and a table of dimensions and tolerances.

METRIC		Apple Inc.	
		<p>STATE OF PROPRIETARY INFORMATION THE INFORMATION CONTAINED HEREIN IS THE PROPERTY OF APPLE INC. THE INFORMATION REPRODUCED HEREIN IS UNCLASSIFIED AND IS NOT TO BE REPRODUCED OR TRANSMITTED IN ANY FORM OR BY ANY MEANS, ELECTRONIC OR MECHANICAL, INCLUDING PHOTOCOPYING, RECORDING, OR BY ANY INFORMATION STORAGE AND RETRIEVAL SYSTEM, WITHOUT THE WRITTEN PERMISSION OF APPLE INC.</p>	
DIMENSIONS ARE IN MILLIMETERS		<p>Pod touch 32GB and 64GB Fall 2009</p>	
TOLERANCES		<p>X.X ±0.4 X.XX ±0.20 X.XXX ±0.100 ANGLES ±0.5°</p>	
DO NOT SCALE DRAWINGS		<p>SIZE NONE</p>	
THIRD ANGLE PROJECTION		<p>NX GENERATED</p>	

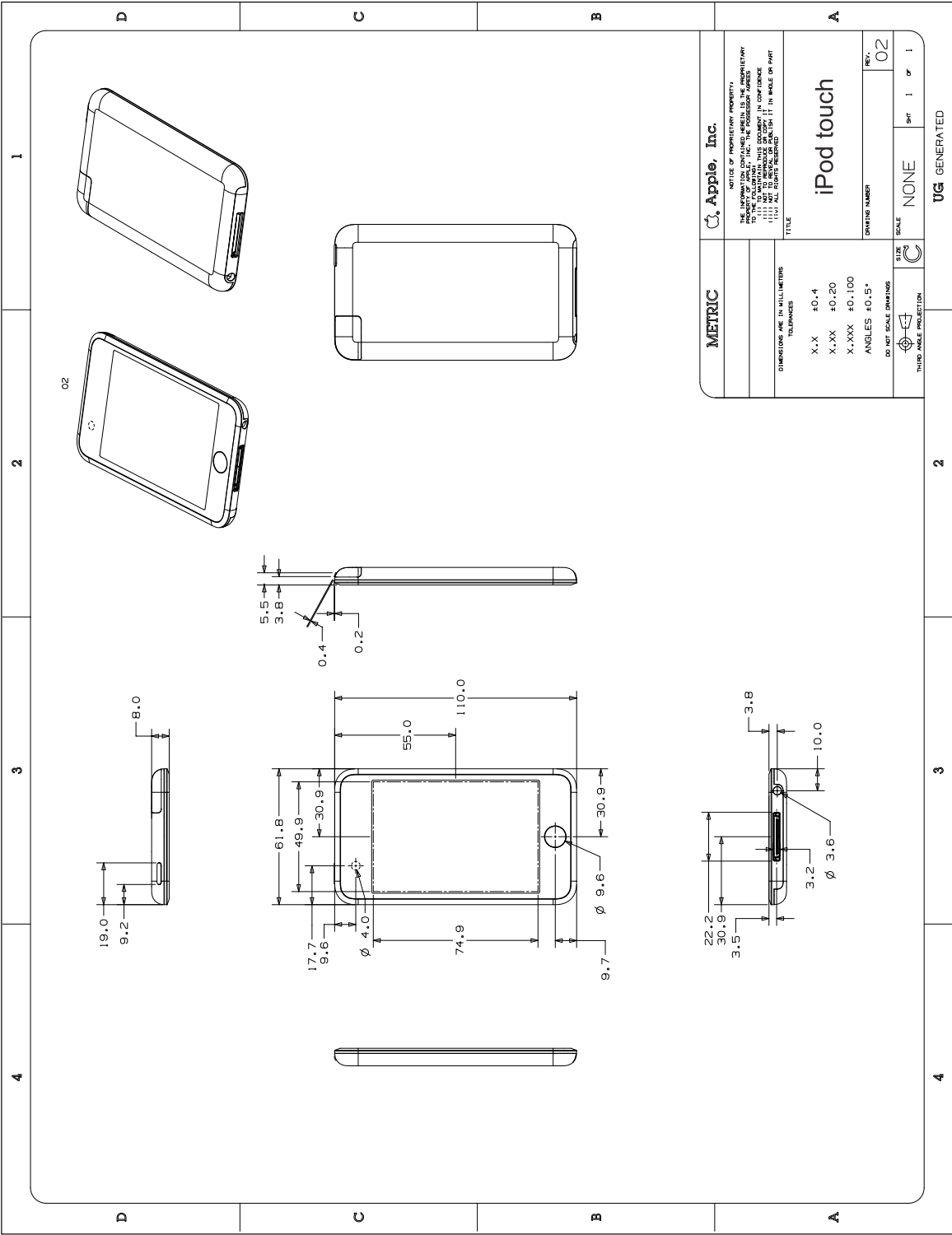
3.37 iPod touch (2nd generation)

Figure 3-37 iPod touch 2nd gen. 8GB, 16GB, 32GB Dimensional Drawing



3.38 iPod touch

Figure 3-38 iPod touch Dimensional Drawing

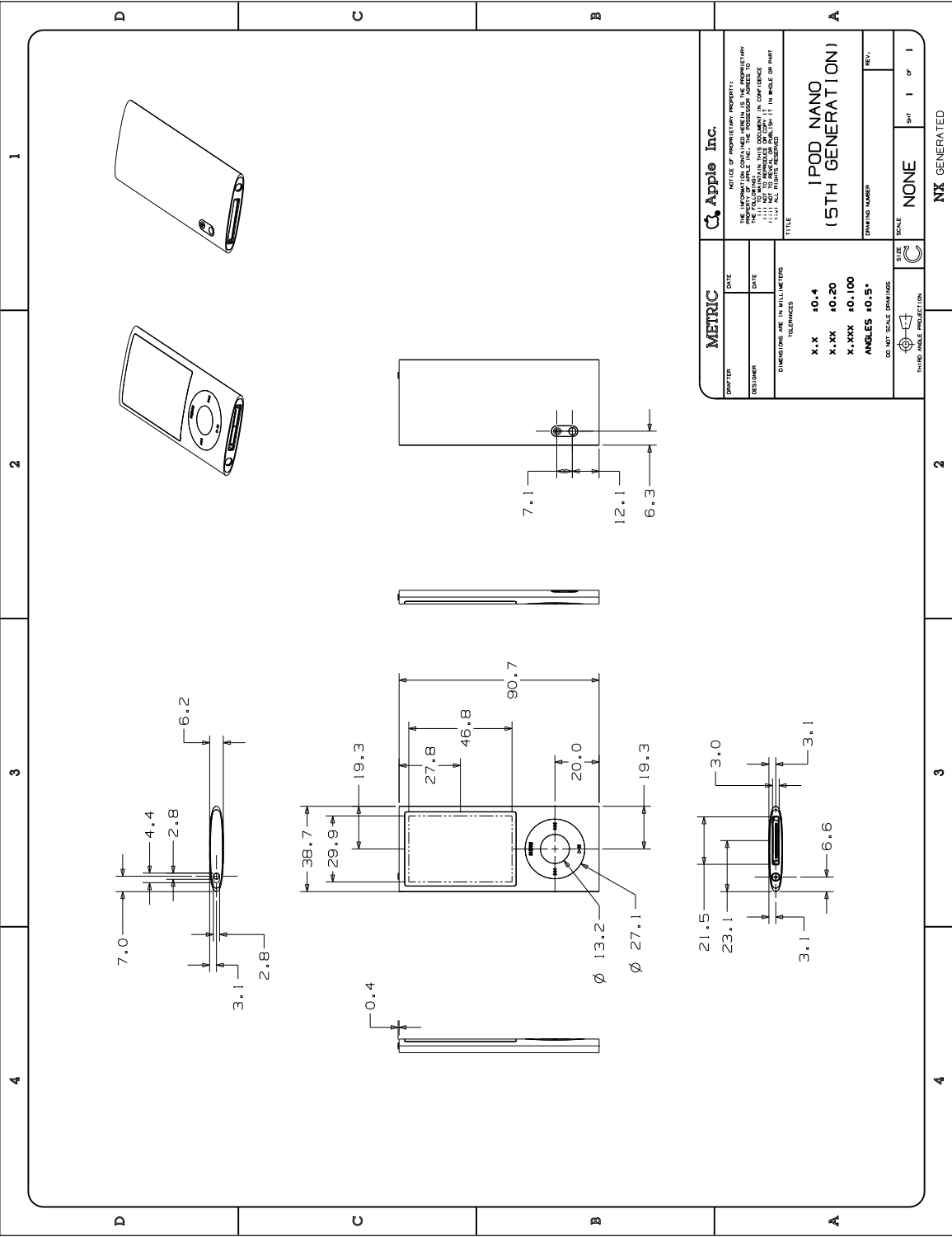


[illegible]

[illegible]

3.4.1 iPod nano (5th generation)

Figure 3-41 iPod nano 5th gen. Dimensional Drawing



Technical drawing of an iPod nano (4th Generation) showing front, back, and side views with dimensions in millimeters.

Dimensions (mm):

- Front View: 7.0, 4.4, 2.8, 6.2, 3.1, 2.8
- Back View: 38.7, 29.9, 19.3, 24.3, 39.8, 90.7, 23.3, 13.2, 28.5, 19.3
- Side View: 22.1, 15.6, 3.1, 3.1, 6.6

Table 1: METRIC

DATE	DATE
DESIGNER	DATE

Table 2: TOLERANCES

TOLERANCES
X.X ±0.4
X.XX ±0.20
X.XXX ±0.100
ANGLES ±0.5°

Table 3: DRAWING NUMBER

DRAWING NUMBER
NONE

Table 4: SCALE

SCALE
NONE

Table 5: TITLE

TITLE
iPod nano (4th Generation)

Table 6: DRAWING NUMBER

DRAWING NUMBER
NONE

Table 7: SCALE

SCALE
NONE

Table 8: DRAWING NUMBER

DRAWING NUMBER
NONE

Table 9: SCALE

SCALE
NONE

Table 10: DRAWING NUMBER

DRAWING NUMBER
NONE

Table 11: SCALE

SCALE
NONE

Table 12: DRAWING NUMBER

DRAWING NUMBER
NONE

Table 13: SCALE

SCALE
NONE

Table 14: DRAWING NUMBER

DRAWING NUMBER
NONE

Table 15: SCALE

SCALE
NONE

Table 16: DRAWING NUMBER

DRAWING NUMBER
NONE

Table 17: SCALE

SCALE
NONE

Table 18: DRAWING NUMBER

DRAWING NUMBER
NONE

Table 19: SCALE

SCALE
NONE

Table 20: DRAWING NUMBER

DRAWING NUMBER
NONE

Table 21: SCALE

SCALE
NONE

Table 22: DRAWING NUMBER

DRAWING NUMBER
NONE

Table 23: SCALE

SCALE
NONE

Table 24: DRAWING NUMBER

DRAWING NUMBER
NONE

Table 25: SCALE

SCALE
NONE

Table 26: DRAWING NUMBER

DRAWING NUMBER
NONE

Table 27: SCALE

SCALE
NONE

Table 28: DRAWING NUMBER

DRAWING NUMBER
NONE

Table 29: SCALE

SCALE
NONE

Table 30: DRAWING NUMBER

DRAWING NUMBER
NONE

Table 31: SCALE

SCALE
NONE

Table 32: DRAWING NUMBER

DRAWING NUMBER
NONE

Table 33: SCALE

SCALE
NONE

Table 34: DRAWING NUMBER

DRAWING NUMBER
NONE

Table 35: SCALE

SCALE
NONE

Table 36: DRAWING NUMBER

DRAWING NUMBER
NONE

Table 37: SCALE

SCALE
NONE

Table 38: DRAWING NUMBER

DRAWING NUMBER
NONE

Table 39: SCALE

SCALE
NONE

Table 40: DRAWING NUMBER

DRAWING NUMBER
NONE

Table 41: SCALE

SCALE
NONE

Table 42: DRAWING NUMBER

DRAWING NUMBER
NONE

Table 43: SCALE

SCALE
NONE

Table 44: DRAWING NUMBER

DRAWING NUMBER
NONE

Table 45: SCALE

SCALE
NONE

Table 46: DRAWING NUMBER

DRAWING NUMBER
NONE

Table 47: SCALE

SCALE
NONE

Table 48: DRAWING NUMBER

DRAWING NUMBER
NONE

Table 49: SCALE

SCALE
NONE

Table 50: DRAWING NUMBER

DRAWING NUMBER
NONE

Table 51: SCALE

SCALE
NONE

Table 52: DRAWING NUMBER

DRAWING NUMBER
NONE

Table 53: SCALE

SCALE
NONE

Table 54: DRAWING NUMBER

DRAWING NUMBER
NONE

Table 55: SCALE

SCALE
NONE

Table 56: DRAWING NUMBER

DRAWING NUMBER
NONE

Table 57: SCALE

SCALE
NONE

Table 58: DRAWING NUMBER

DRAWING NUMBER
NONE

Table 59: SCALE

SCALE
NONE

Table 60: DRAWING NUMBER

DRAWING NUMBER
NONE

Table 61: SCALE

SCALE
NONE

Table 62: DRAWING NUMBER

DRAWING NUMBER
NONE

Table 63: SCALE

SCALE
NONE

Table 64: DRAWING NUMBER

DRAWING NUMBER
NONE

Table 65: SCALE

SCALE
NONE

Table 66: DRAWING NUMBER

DRAWING NUMBER
NONE

Table 67: SCALE

SCALE
NONE

Table 68: DRAWING NUMBER

DRAWING NUMBER
NONE

Table 69: SCALE

SCALE
NONE

Table 70: DRAWING NUMBER

DRAWING NUMBER
NONE

Table 71: SCALE

SCALE
NONE

Table 72: DRAWING NUMBER

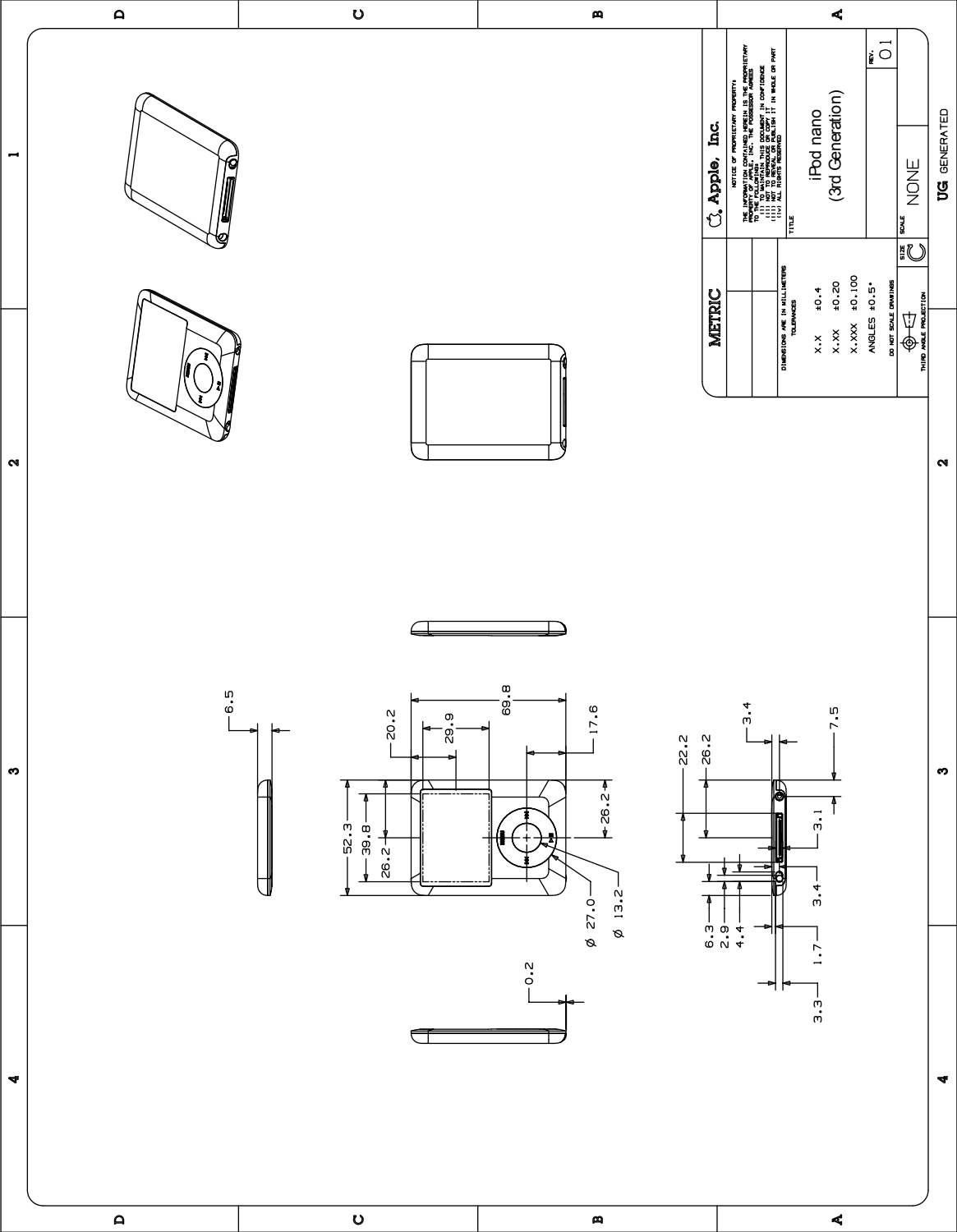
DRAWING NUMBER
NONE

Table 73: SCALE

SCALE</

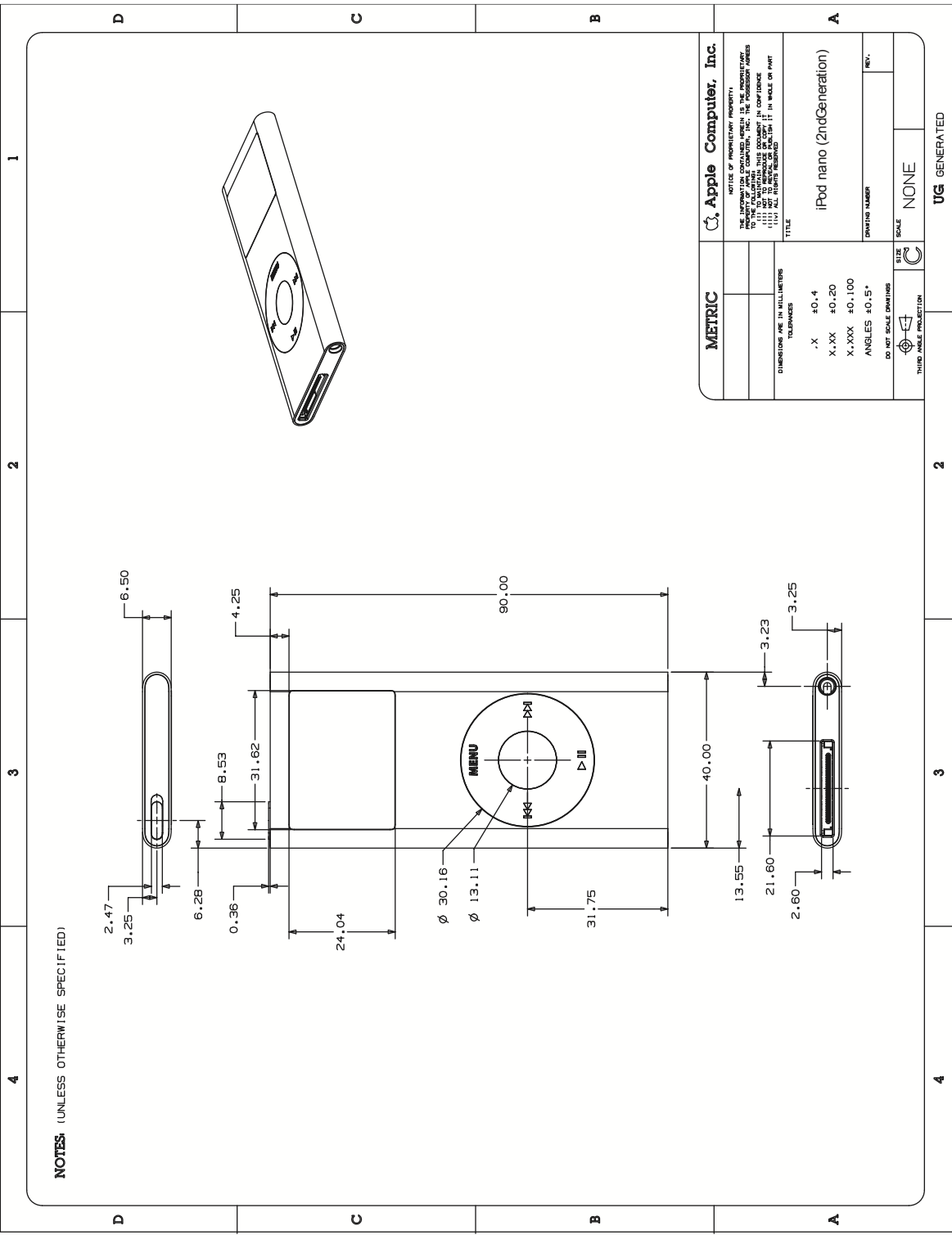
3.43 iPod nano (3rd generation)

Figure 3-43 iPod nano 3rd gen. Dimensional Drawing



3.44 iPod nano (2nd generation)

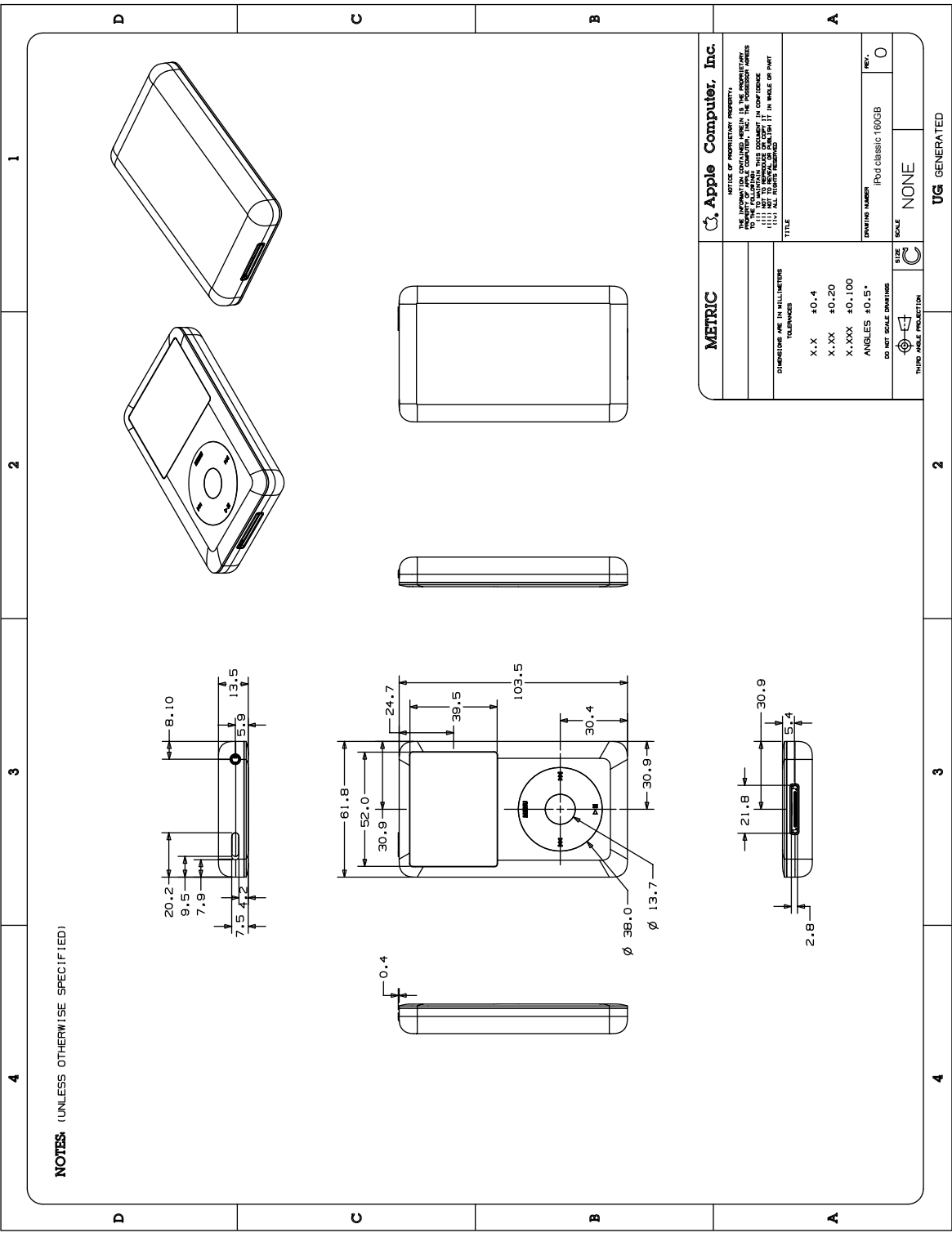
Figure 3-44 iPod nano 2nd gen. Dimensional Drawing



Technical drawing of the iPod nano showing three views: front, side, and top. The front view shows a rectangular device with a screen, a circular click wheel, and a speaker. Dimensions include 40.00 mm width, 90.00 mm height, and a screen size of 31.79 mm. The side view shows the device's thickness with dimensions like 4.72 mm and 4.98 mm. The top view shows the device's width with dimensions like 29.57 mm and 22.18 mm. A small detail of the click wheel is shown separately with a diameter of 30.23 mm. A small image of the iPod nano is included in the top right corner.

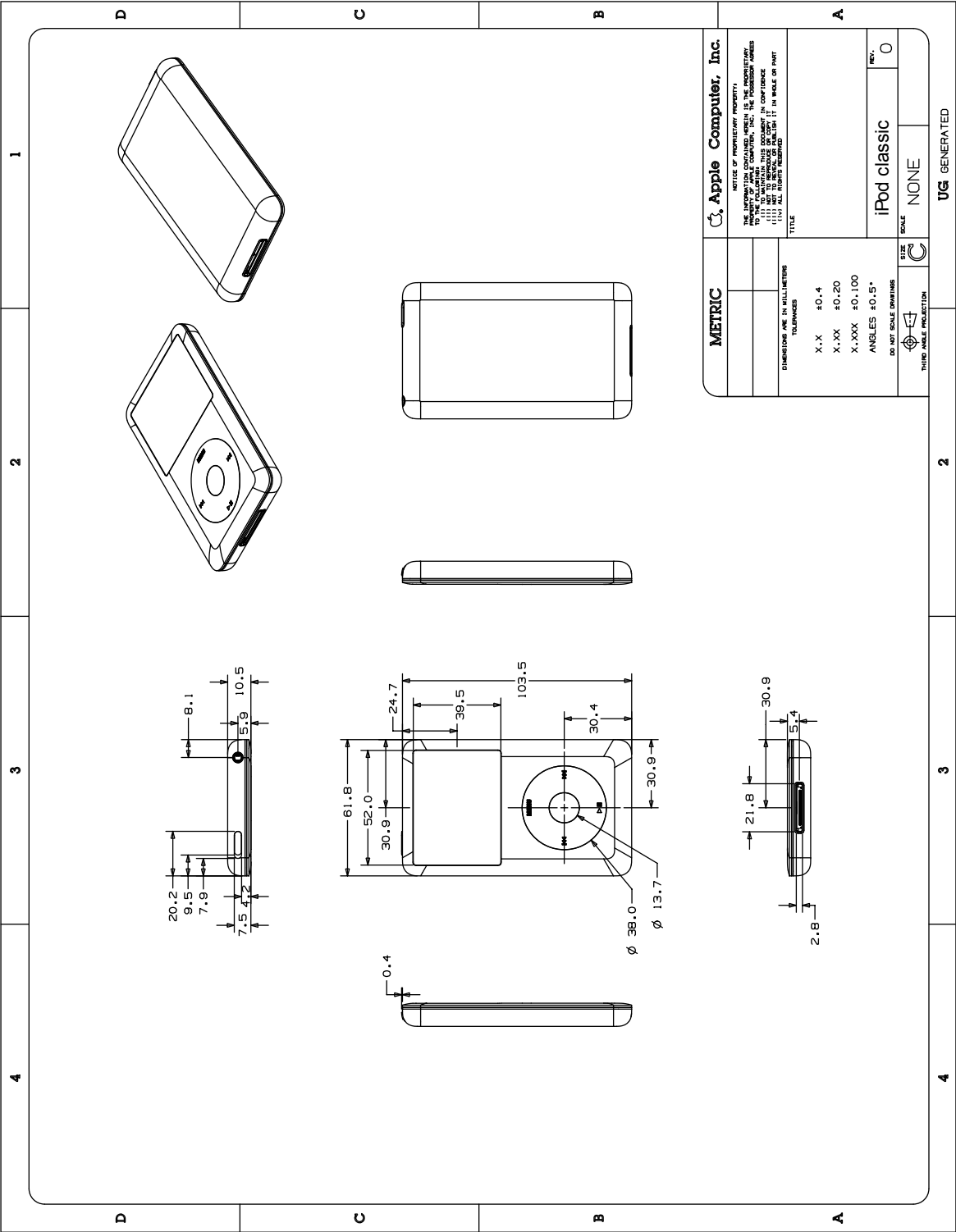
3.46 iPod classic 160GB

Figure 3-46 iPod classic 160GB Dimensional Drawing



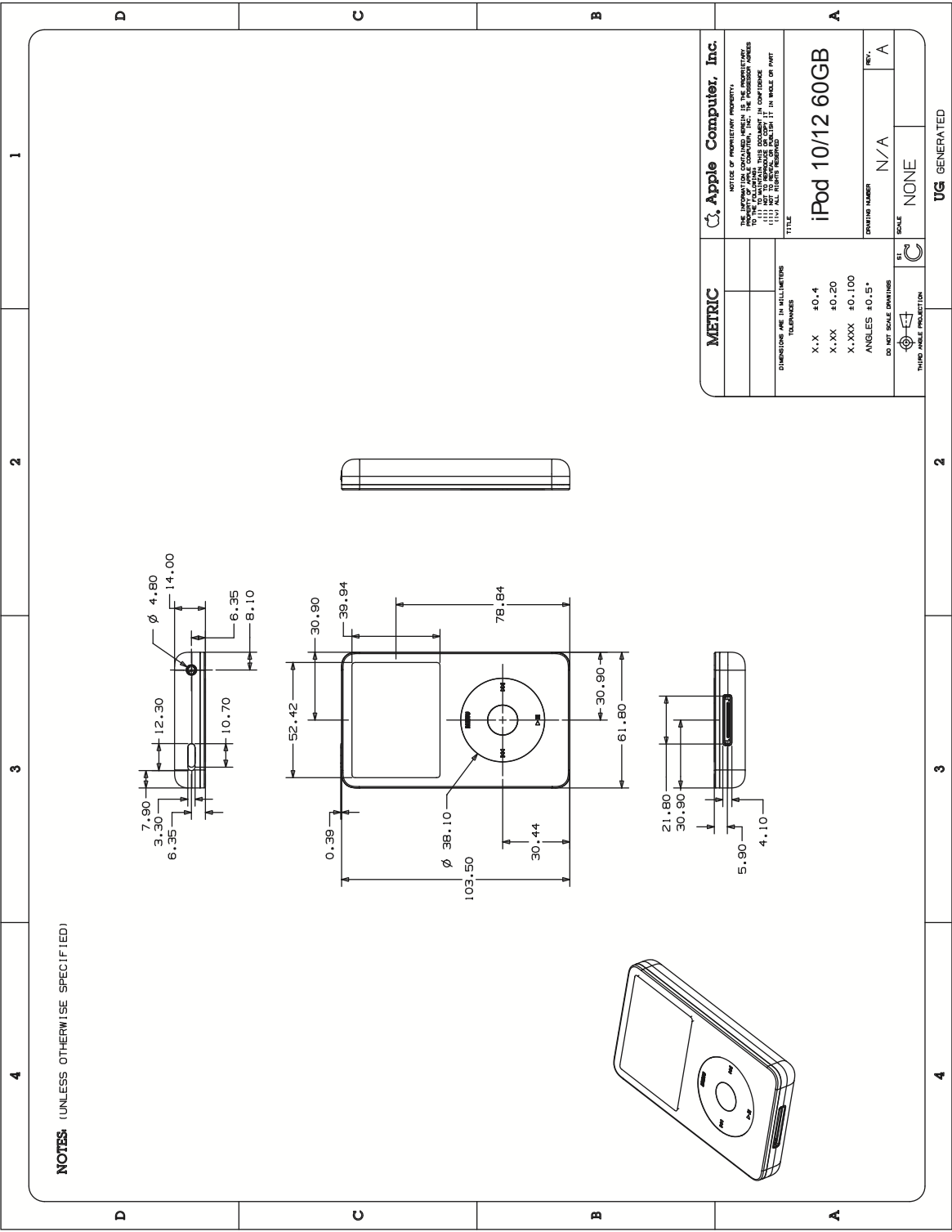
3.47 iPod classic 80GB

Figure 3-47 iPod classic 80GB Dimensional Drawing



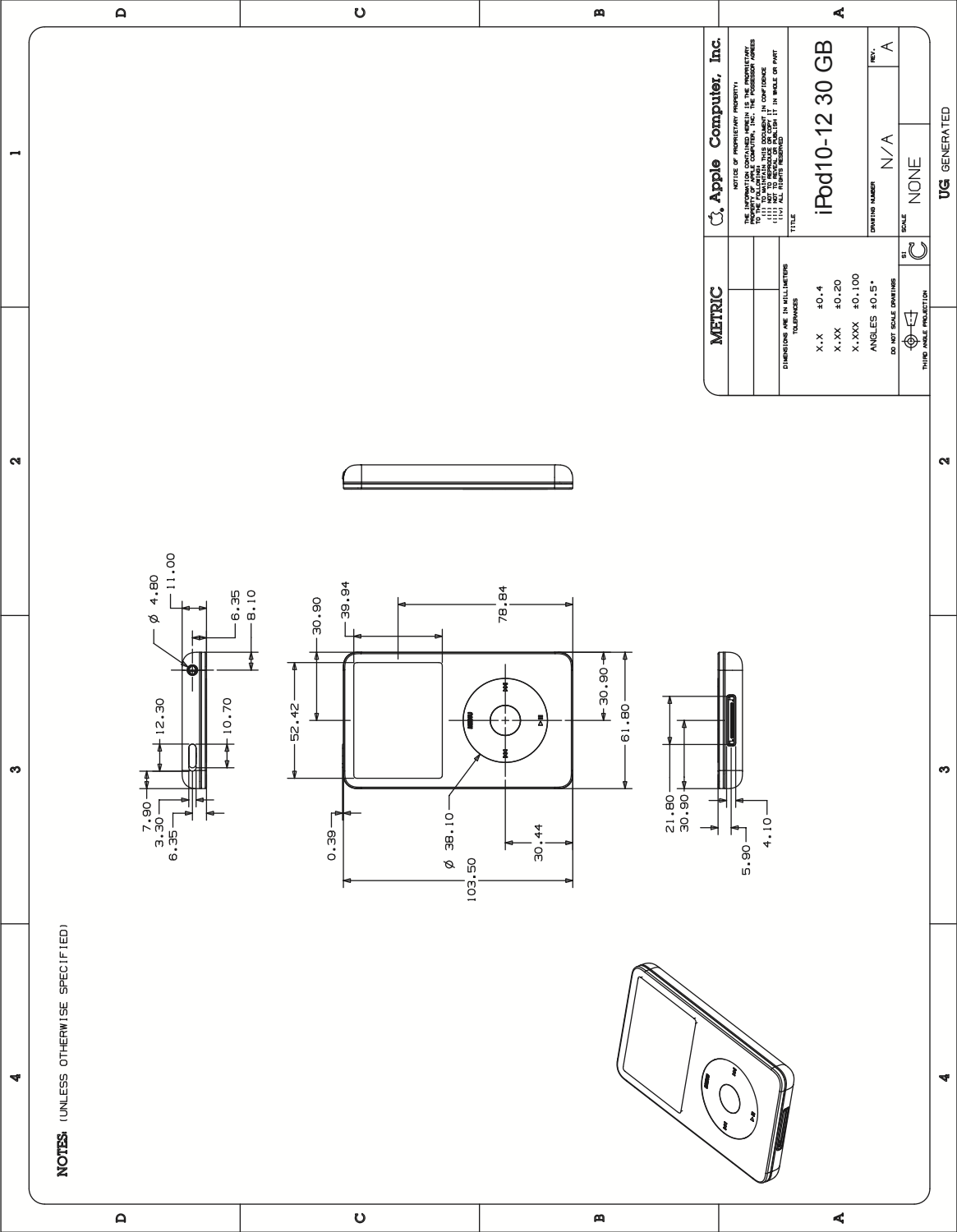
3.48 iPod (5th generation) 60GB/80GB

Figure 3-48 iPod 5th gen. 60GB/80GB Dimensional Drawing



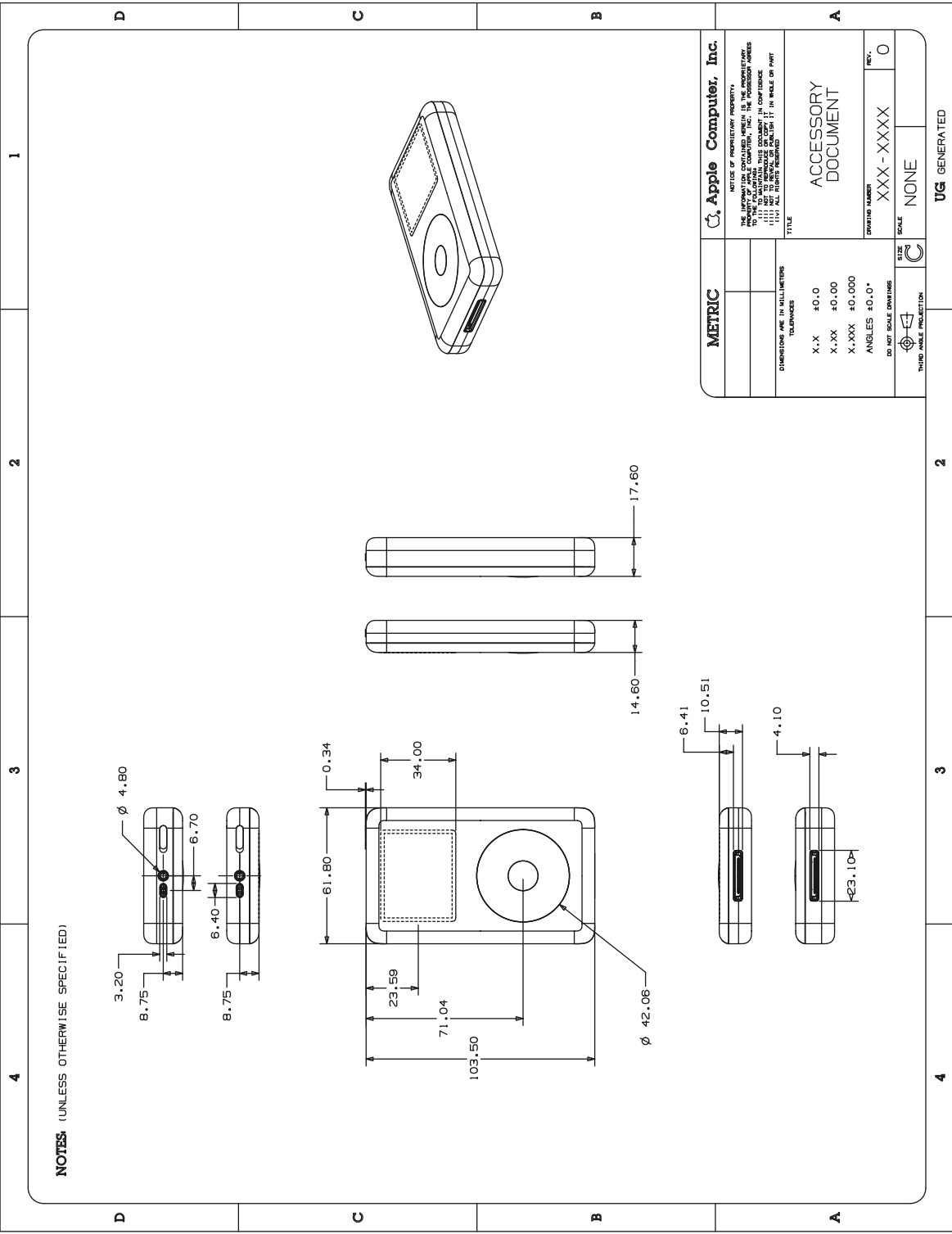
3.49 iPod (5th generation) 30GB

Figure 3-49 iPod 5th gen. 30GB Dimensional Drawing



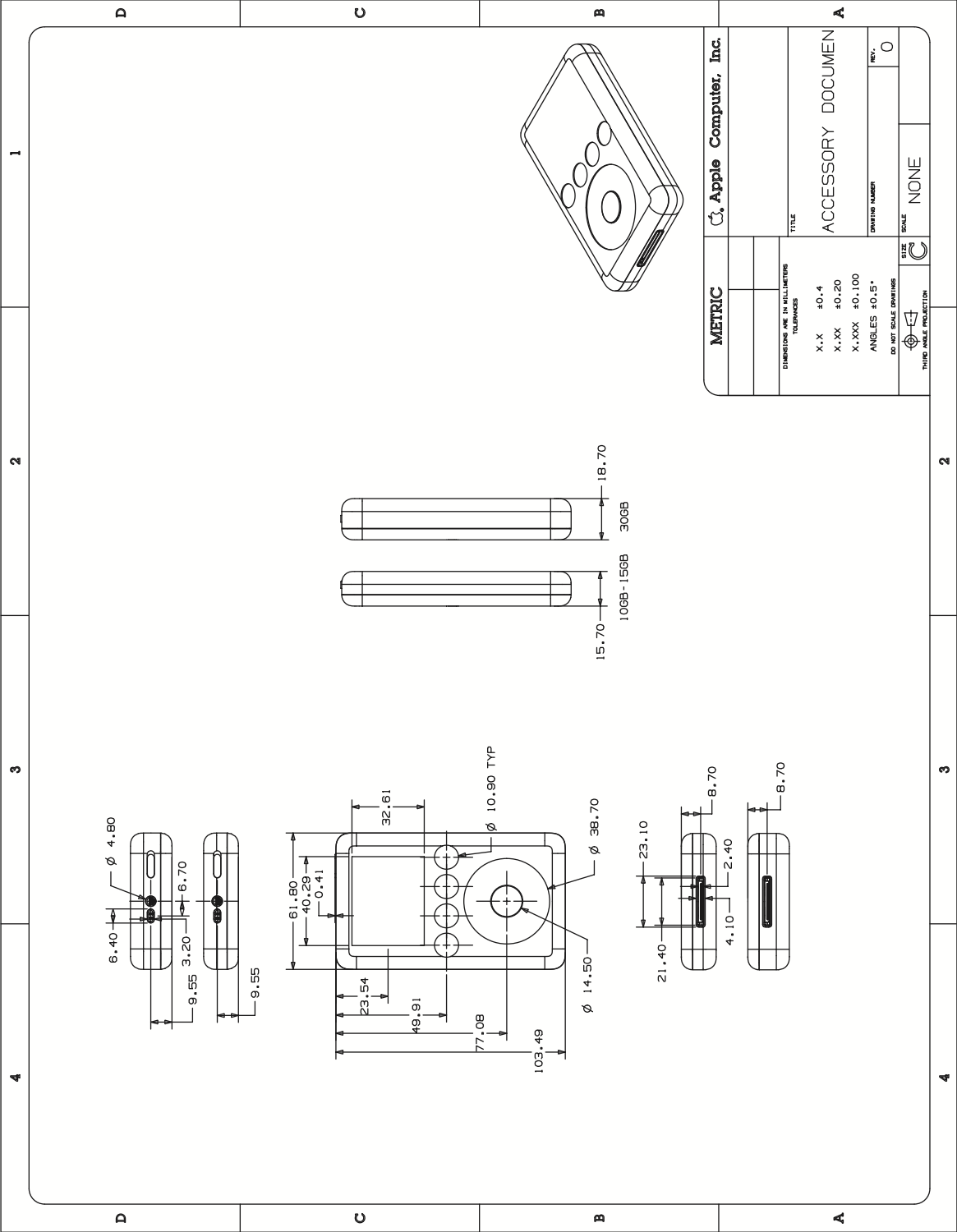
3.50 iPod (4th generation)

Figure 3-50 iPod 4th gen. Dimensional Drawing



3.51 iPod (3rd generation)

Figure 3-51 iPod 3rd gen. Dimensional Drawing



Technical drawing of the Apple Computer IIc Plus, showing front, top, and side views with dimensions in millimeters.

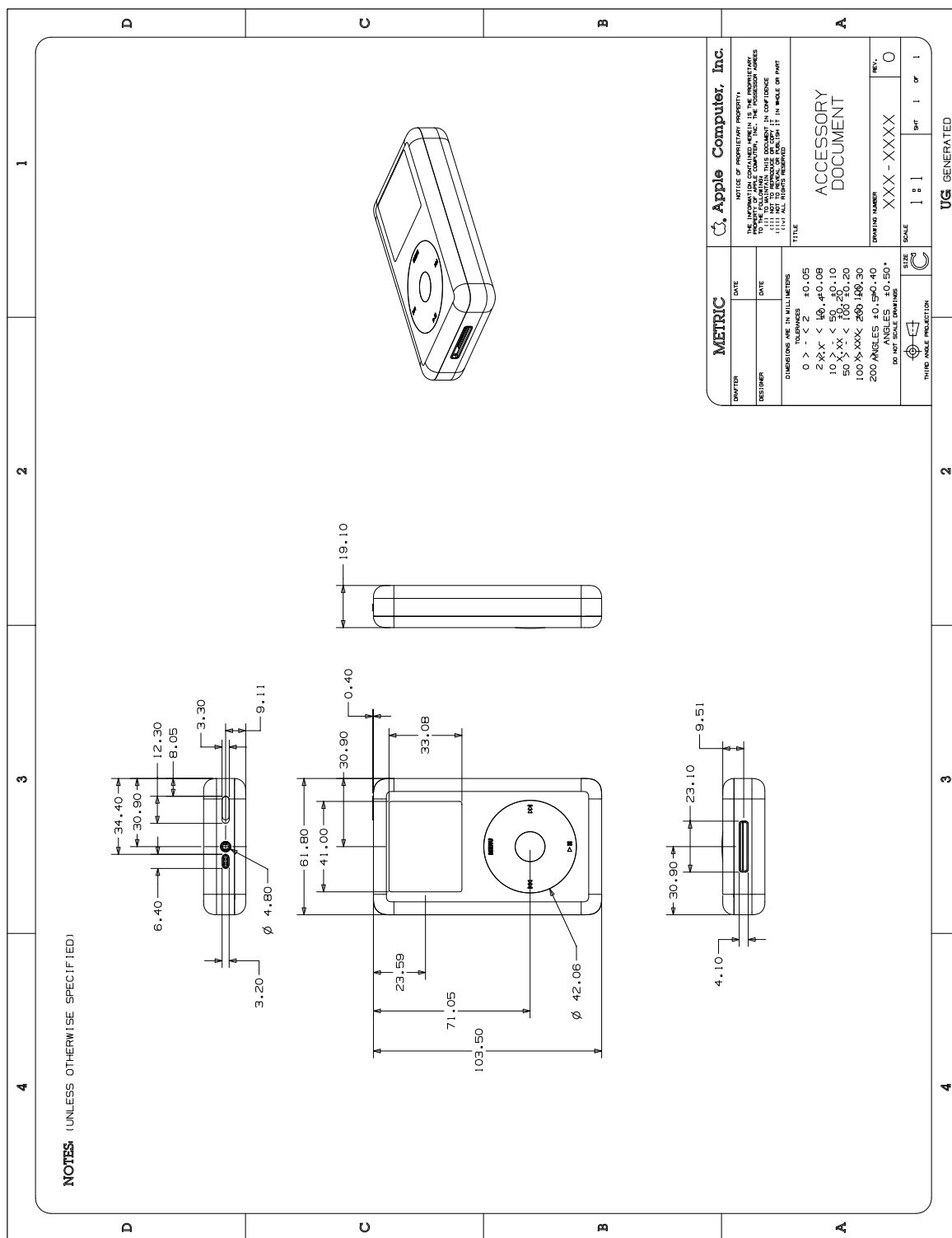
Dimensions (mm):

- Front View: 103.50 (total width), 71.05 (width to center of disk), 23.60 (width to edge of disk), 41.00 (width of disk), 61.80 (width of case), 0.40 (gap between case and disk), 33.08 (width of case to edge of disk), 13.50 (radius of case), 42.06 (radius of case), 9.52 (height of case).
- Top View: 19.10 (width of case), 16.10 (width of case), 40GB-60GB (case type).
- Side View: 9.11 (height of case), 9.11 (height of case), 9.52 (height of case).

Table of Dimensions in Millimeters:

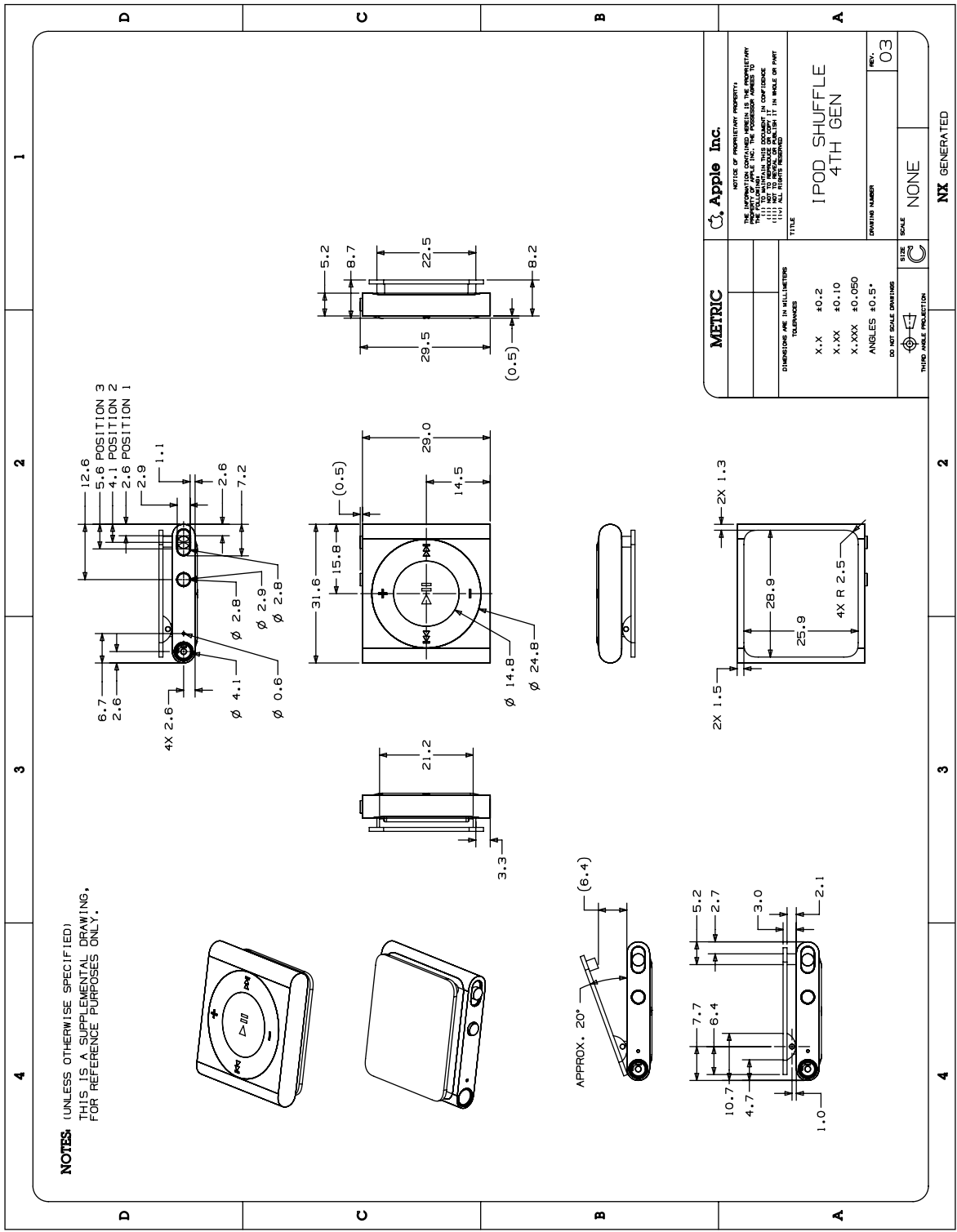
TOLERANCES	UNIT
0 > - < 10	±0.00
10 > - < 25	±0.01
25 > - < 50	±0.02
50 > - < 100	±0.03
100 > - < 200	±0.04
200 > - < 500	±0.05
500 > - < 1000	±0.06
1000 > - < 2000	±0.07
2000 > - < 5000	±0.08
5000 > - < 10000	±0.09
10000 > - < 20000	±0.10
20000 > - < 50000	±0.12
50000 > - < 100000	±0.15
100000 > - < 200000	±0.20
200000 > - < 500000	±0.25
500000 > - < 1000000	±0.30
1000000 > - < 2000000	±0.35
2000000 > - < 5000000	±0.40
5000000 > - < 10000000	±0.45
10000000 > - < 20000000	±0.50
20000000 > - < 50000000	±0.55
50000000 > - < 100000000	±0.60
100000000 > - < 200000000	±0.65
200000000 > - < 500000000	±0.70
500000000 > - < 1000000000	±0.75
1000000000 > - < 2000000000	±0.80
2000000000 > - < 5000000000	±0.85
5000000000 > - < 10000000000	±0.90
10000000000 > - < 20000000000	±0.95
20000000000 > - < 50000000000	±1.00
50000000000 > - < 100000000000	±1.05
100000000000 > - < 200000000000	±1.10
200000000000 > - < 500000000000	±1.15
500000000000 > - < 1000000000000	±1.20
1000000000000 > - < 2000000000000	±1.25
2000000000000 > - < 5000000000000	±1.30
5000000000000 > - < 10000000000000	±1.35
10000000000000 > - < 20000000000000	±1.40
20000000000000 > - < 50000000000000	±1.45
50000000000000 > - < 100000000000000	±1.50
100000000000000 > - < 200000000000000	±1.55
200000000000000 > - < 500000000000000	±1.60
500000000000000 > - < 1000000000000000	±1.65
1000000000000000 > - < 2000000000000000	±1.70
2000000000000000 > - < 5000000000000000	±1.75
5000000000000000 > - < 10000000000000000	±1.80
10000000000000000 > - < 20000000000000000	±1.85
20000000000000000 > - < 50000000000000000	±1.90
50000000000000000 > - < 100000000000000000	±1.95
100000000000000000 > - < 200000000000000000	±2.00
200000000000000000 > - < 500000000000000000	±2.05
500000000000000000 > - < 1000000000000000000	±2.10
1000000000000000000 > - < 2000000000000000000	±2.15
2000000000000000000 > - < 5000000000000000000	±2.20
5000000000000000000 > - < 10000000000000000000	±2.25
10000000000000000000 > - < 20000000000000000000	±2.30
20000000000000000000 > - < 50000000000000000000	±2.35
50000000000000000000 > - < 100000000000000000000	±2.40
100000000000000000000 > - < 200000000000000000000	±2.45
200000000000000000000 > - < 500000000000000000000	±2.50
500000000000000000000 > - < 1000000000000000000000	±2.55
1000000000000000000000 > - < 2000000000000000000000	±2.60
2000000000000000000000 > - < 5000000000000000000000	±2.65
5000000000000000000000 > - < 10000000000000000000000	±2.70
10000000000000000000000 > - < 20000000000000000000000	±2.75
20000000000000000000000 > - < 50000000000000000000000	±2.80
50000000000000000000000 > - < 100000000000000000000000	±2.85
100000000000000000000000 > - < 200000000000000000000000	±2.90
200000000000000000000000 > - < 500000000000000000000000	±2.95
500000000000000000000000 > - < 1000000000000000000000000	±3.00

Figure 3-53 iPod photo Dimensional Drawing



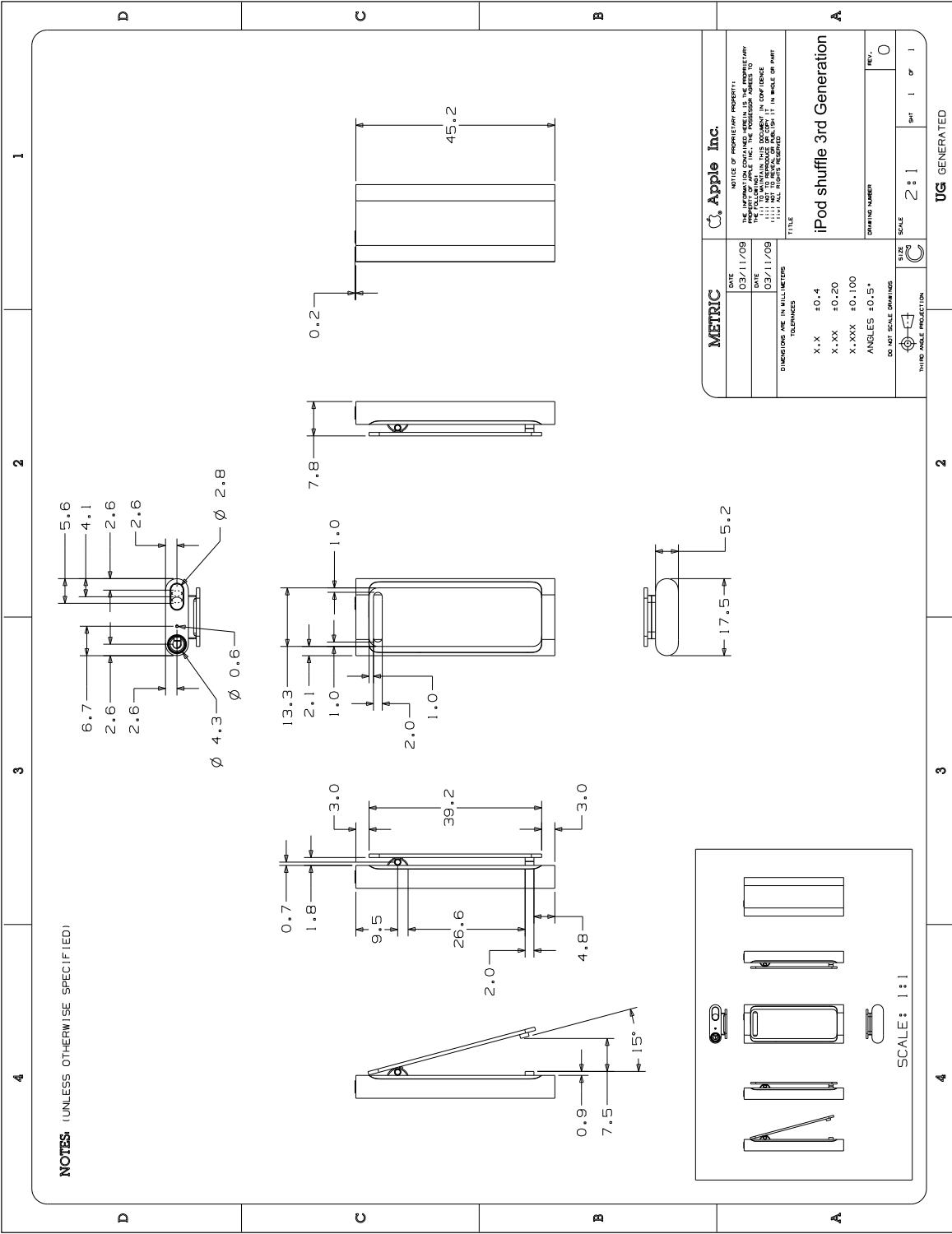
3.54 iPod shuffle (4th generation)

Figure 3-54 iPod shuffle 4th gen. Dimensional Drawing



3.55 iPod shuffle (3rd generation)

Figure 3-55 iPod shuffle 3rd gen. Dimensional Drawing



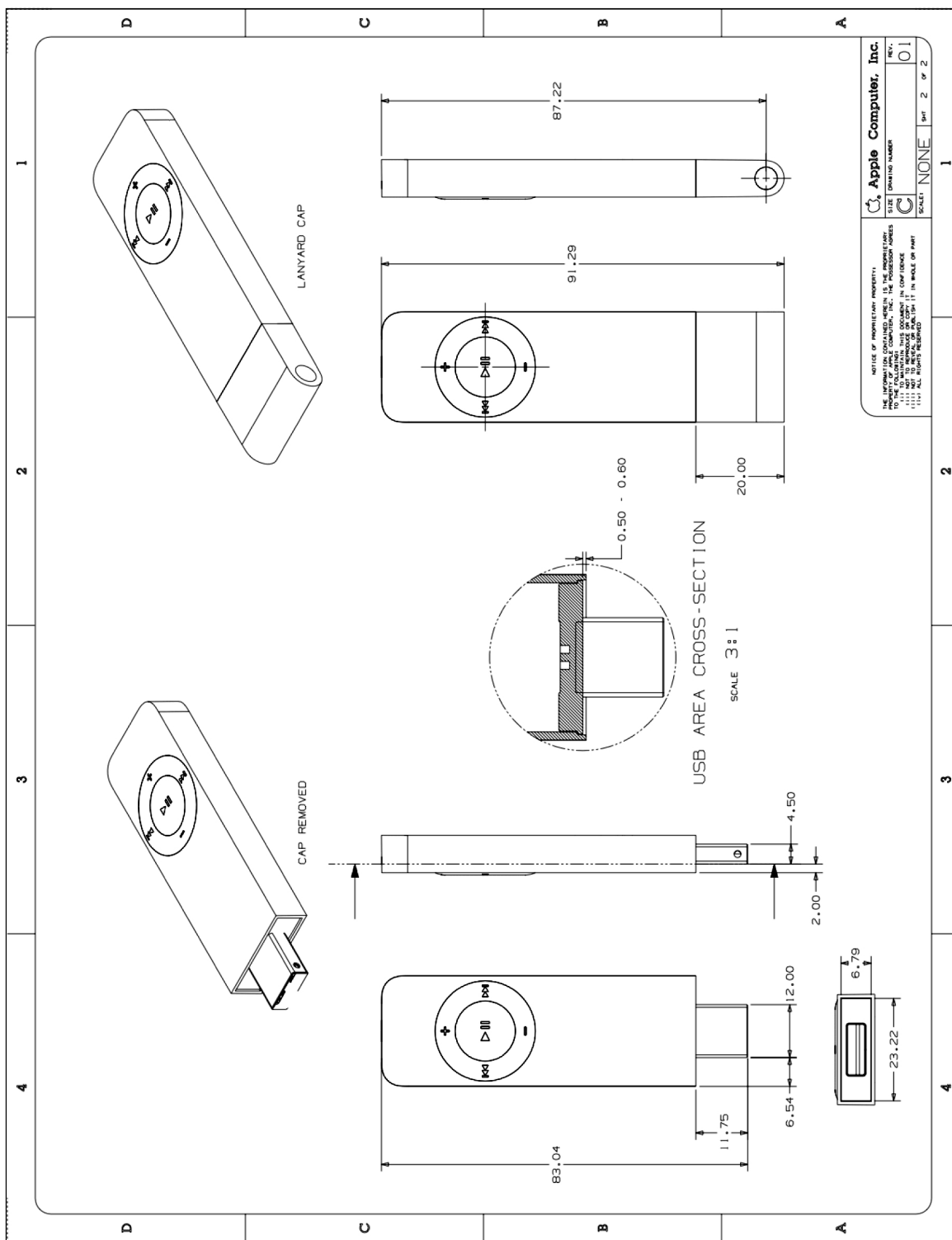
[illegible]

NOTES: UNLESS OTHERWISE SPECIFIED:

REV	DATE	DESCRIPTION OF REVISION
01	NA	DRAWING CREATED JAN. M. 01/14/05

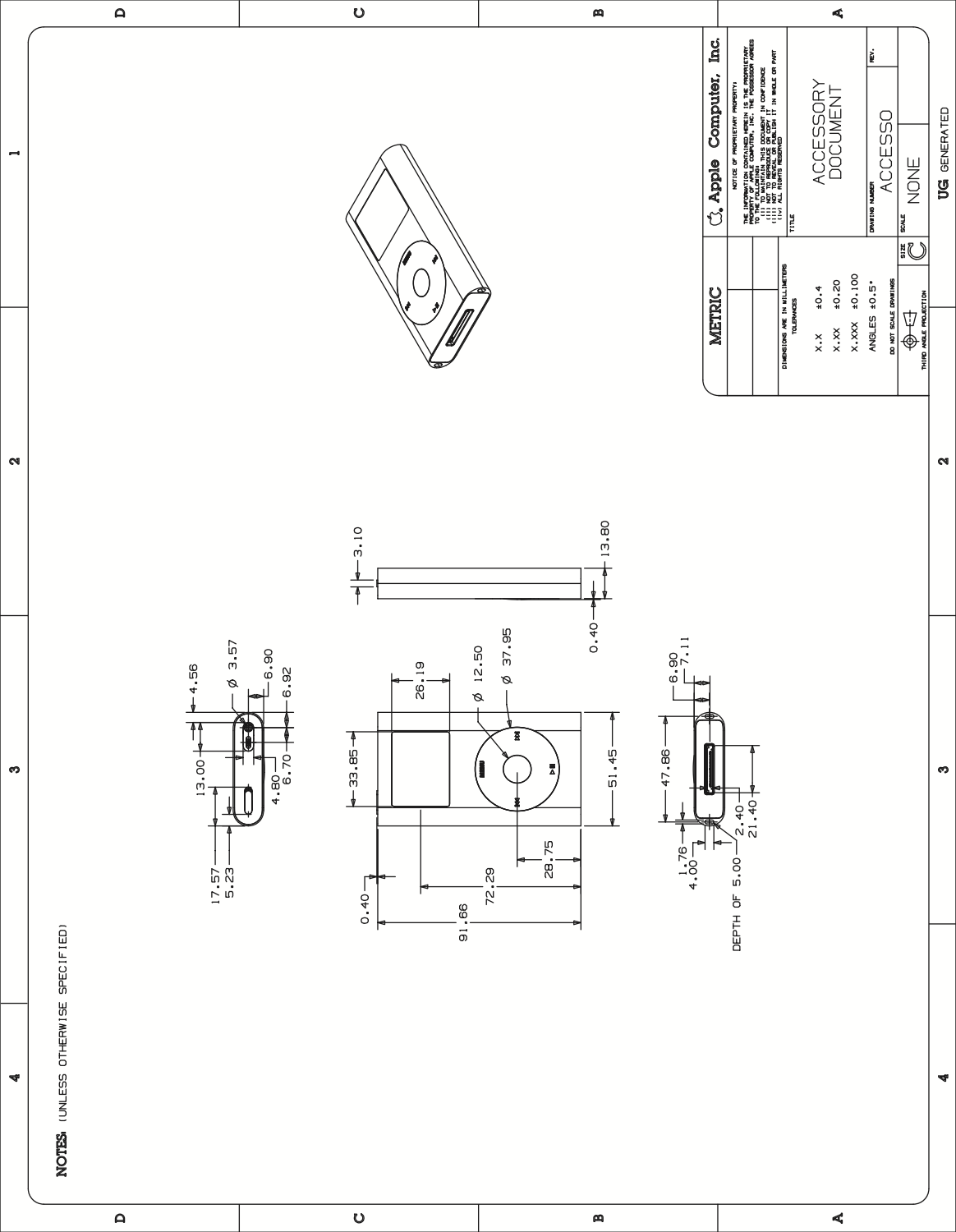
UG GENERATED

Figure 3-58 iPod shuffle Dimensional Drawing (2 of 2)



3.58 iPod mini

Figure 3-59 iPod mini Dimensional Drawing



4. Revision History

This table describes the changes to the Case Design Guidelines for Apple Devices.

Date	Notes
2015-09-10	<i>Release R10</i>
	Updated Product Design (page 8)
	Updated Sensors (page 11)
	Updated Camera (page 11)
	Updated Environmental (page 15)
	Updated Near Field Communication (NFC) (page 16)
	Updated Touchscreen (page 16)
	Updated Device Dimensional Drawings (page 18): Added dimensional drawings for iPhone 6s Plus, iPhone 6s, iPad Pro, and iPad mini 4. Updated dimensional drawings for iPhone 6 Plus and iPhone 6
2015-07-15	<i>Release R9</i>
	Added Introduction (page 7)
	Added Touchscreen (page 9)
	Updated Device Dimensional Drawings (page 18): Added dimensional drawings for iPod touch (6th generation)
2014-10-16	<i>Release R8</i>
	Updated Product Design (page 8)
	Updated Camera (page 11)
	Updated Environmental (page 15)
	Updated Device Dimensional Drawings (page 18): Updated dimensional drawings for iPhone 6 Plus and iPhone 6

	Updated Device Dimensional Drawings (page 18): Added dimensional drawings for iPad Air 2
	Updated Device Dimensional Drawings (page 18): Renamed iPad mini with Retina display to iPad mini 2 and iPad mini 3
2014-09-10	<i>Release R7</i>
	Renamed 'Mechanical Requirements' to 'Product Design'
	Updated Access to the Headset Jack and 30-pin or Lightning Connector (page 8)
	Added Device Protection (page 9)
	Added Cover Glass Contact (page 9)
	Added Dock Compatibility (page 9)
	Updated Magnetic Interference (page 11)
	Updated Touch ID Sensor (page 11)
	Updated Environmental (page 15)
	Added Near Field Communication (NFC) (page 16)
	Updated Device Dimensional Drawings (page 18): Added dimensional drawings for iPhone 6 Plus and iPhone 6
2013-10-22	<i>Release R6</i>
	Updated Device Dimensional Drawings (page 18): Added dimensional drawings for iPad mini 2 and iPad Air.
2013-09-13	<i>Release R5</i>
	Updated "1.1 Mechanical Requirements"
	Updated Sensors (page 11)
	Updated Camera (page 11)
	Updated Touchscreen (page 16)
	Updated Device Dimensional Drawings (page 18): Added dimensional drawings for iPhone 5s and iPhone 5c
2013-05-08	<i>Release R4</i>

	Added Device Dimensional Drawings (page 18)
2012-09-12	<i>Release R3</i>
	Added information for devices with the Apple Lightning connector: iPhone 5, iPod touch (5th generation), and iPod nano (7th generation).
2011-03-11	<i>Release R2</i>
	Updated guidelines to cover cases for iPads.
	Changed document title from "iPhone Case Design Guidelines" to "Case Design Guidelines for Apple Devices."
2011-02-28	<i>Release R1</i>
	First Release of "iPhone Case Design Guidelines"



Apple Inc.
Copyright © 2015 Apple Inc.
All rights reserved.

Terms and Conditions ("Terms")

These Guidelines are made available to you for informational purposes only. If you make or distribute any accessory for an Apple device based on or in connection with these Guidelines ("Accessories"), you agree to the following covenants, terms and conditions:

All intellectual property rights in and to the Guidelines, and all technology described therein, are retained by Apple Inc. ("Apple"). You acknowledge and agree that Apple is not granting you, and nothing contained herein shall constitute or be construed or interpreted as a grant, by implication, estoppel or otherwise, of any license, covenant, immunity, release or right under or with respect to any intellectual property rights of Apple, including without limitation any rights to make, use, have made, sell, import, or otherwise relating in any way to any Apple device or technology described in or relating to the Guidelines.

You agree to follow Apple's Guidelines For Using Apple Trademarks and Copyrights as published on Apple's website at www.apple.com/legal/guidelinesfor3rdparties.html ("IP Guidelines") and as may be modified from time to time. You agree not to use the marks "Apple," the Apple Logo, "Mac," "iPhone," "iPod touch," "iPad," "Apple Watch," "WATCH" or any other marks belonging or licensed to Apple in any way except as expressly authorized in writing by Apple in each instance or as permitted in the IP Guidelines. You agree that all goodwill arising out of your authorized use of Apple's marks shall inure to the benefit of and belong to Apple.

You agree to indemnify, hold harmless, and, at Apple's option, defend, Apple against any claims, causes of action, losses, liabilities, damages, fines, settlements, costs, fees, and expenses (including attorney and other professional fees and expenses) arising out of: (i) your use of the Guidelines, including without limitation, any claims that any Accessory, or the combination of any Accessory with any software, technology, intellectual property, device, apparatus or assembly not supplied by Apple, infringes any patent, copyright, trade secret or other intellectual property right; (ii) the manufacture, use, promotion, distribution, sale, offer for sale, import, other distribution or exploitation or performance of any product, case, cover, band, charging stand, or other Accessory or product incorporating any Accessory, including any personal injury or product liability claims; or (iii) any failure to comply with any of the Guidelines. You will not, without Apple's prior written consent, make any admissions of liability, enter into any settlement that imposes any obligation on Apple, or publicize any settlement details relating to Apple. In addition, for any claims related to these Terms where you do not have an indemnification obligation, you shall provide all reasonable assistance to Apple and/or its counsel in connection with the defense, remedy or mitigation of such claims.

Applicable laws or regulations may impose additional restrictions or requirements on Accessories or products that incorporate the Accessories. You represent and warrant that you are in full compliance with all applicable laws, regulations, and policies in the United States and in any other location in which you engage, in whole or in part, in any activity related to the design, manufacture, marketing, sale or offer for sale, use, or other distribution of Accessories or products that incorporate the Accessories. You agree to promptly notify Apple of any complaints or threats of complaints regarding products that incorporate the Accessories with respect to any such regulatory requirements, in which case Apple may limit or terminate your ability to make, sell or purchase additional Accessories.

You expressly acknowledge and agree that access to the Guidelines is at your sole and entire risk and that you are solely responsible and liable for any harm or damage to any Apple product arising out of any breach by you of these covenants, terms and conditions. THE GUIDELINES ARE PROVIDED "AS IS" AND WITHOUT REPRESENTATION, WARRANTY, UPGRADES OR SUPPORT OF ANY KIND. APPLE AND APPLE'S DISTRIBUTORS, AFFILIATES, LICENSOR(S) AND SUPPLIER(S) ("APPLE PARTIES") EXPRESSLY DISCLAIM ALL REPRESENTATIONS, WARRANTIES AND CONDITIONS, EXPRESS OR IMPLIED, INCLUDING THE IMPLIED WARRANTIES AND CONDITIONS OF MERCHANTABILITY, OF SATISFACTORY QUALITY, OF FITNESS FOR A PARTICULAR PURPOSE, OF NON-INFRINGEMENT AND OF ACCURACY. NONE OF THE APPLE PARTIES WARRANTS THAT THE GUIDELINES OR ANY ACCESSORY WILL MEET YOUR REQUIREMENTS, THAT DEFECTS IN THEM WILL BE CORRECTED OR THAT THEY WILL BE COMPATIBLE WITH FUTURE APPLE PRODUCTS. NO ORAL OR WRITTEN INFORMATION OR ADVICE GIVEN BY ANY APPLE PARTY OR AN APPLE AUTHORIZED REPRESENTATIVE WILL CREATE A WARRANTY.

EXCEPT TO THE EXTENT SUCH A LIMITATION IS PROHIBITED BY LAW, IN NO EVENT WILL ANY APPLE PARTY BE LIABLE FOR ANY INCIDENTAL, SPECIAL, INDIRECT, CONSEQUENTIAL, EXEMPLARY OR PUNITIVE DAMAGES, INCLUDING LOST PROFITS, LOST REVENUES OR BUSINESS INTERRUPTIONS, ARISING OUT OF OR RELATING TO THE GUIDELINES UNDER A THEORY OF CONTRACT, WARRANTY, TORT (INCLUDING NEGLIGENCE), PRODUCTS LIABILITY OR OTHERWISE, EVEN IF ANY APPLE PARTY HAS BEEN ADVISED OF THE POSSIBILITY OF SUCH DAMAGES, AND NOTWITHSTANDING THE FAILURE OF ESSENTIAL PURPOSE OF ANY REMEDY. IN NO EVENT WILL THE APPLE PARTIES' TOTAL LIABILITY TO YOU FOR ALL DAMAGES AND CLAIMS UNDER OR RELATED TO THE GUIDELINES EXCEED THE AMOUNT OF US\$50.00.

These Terms will be governed by and construed and enforced under the laws of the United States and the State of Delaware, except that the arbitration clause and any arbitration hereunder shall be governed by the Federal Arbitration Act, Chapters 1 and 2. The United Nations Convention on Contracts for the International Sale of Goods shall not apply to these Terms. All disputes arising out of or in connection with these Terms shall be finally settled under the Rules of Arbitration of the International Chamber of Commerce by one arbitrator appointed in accordance with such rules, and shall be conducted according to the International Bar Association Rules on the Taking of Evidence in International Arbitration. The arbitration shall take place in San Francisco, California. The arbitration shall be conducted in English. The award shall be rendered within six months of the commencement of the arbitration, unless the arbitrator determines that the interest of justice requires that such limit be extended.